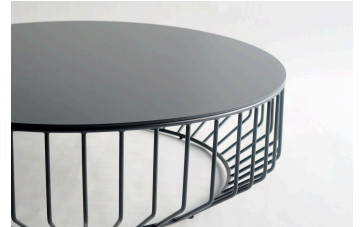
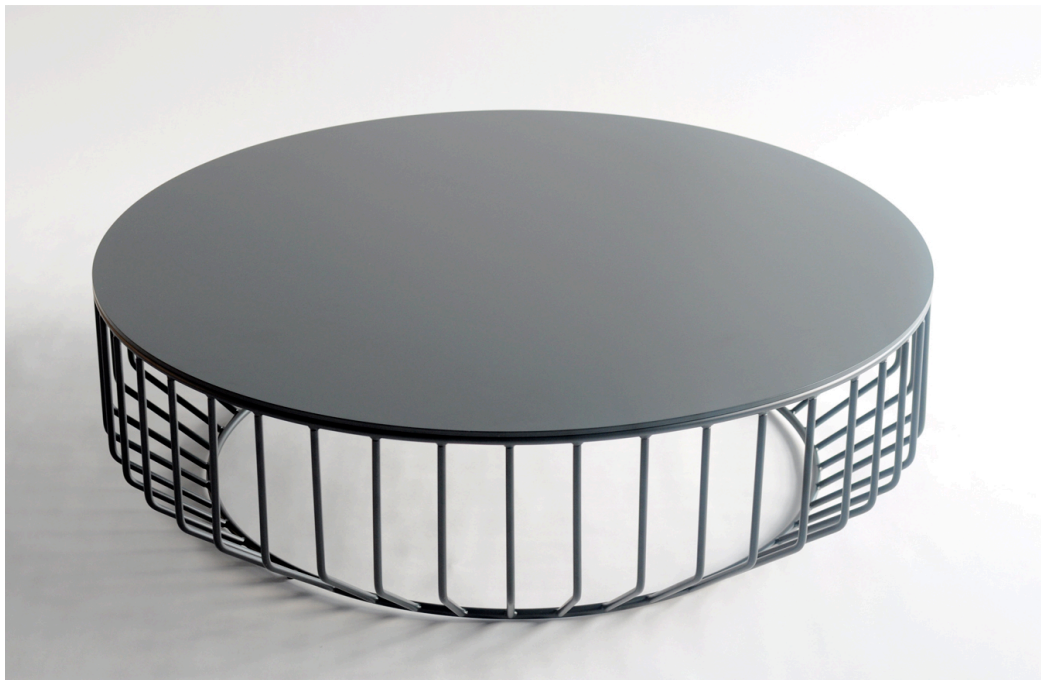


twentieth

Wired Coffee Table - Metal Top

Phase Design



DESCRIPTION

Blending sloping angles and taut lengths of bent metal are a modern interpretation of the wiry idea initially conceived by Warren Platner. The series is made up of a suite of tables, side tables and benches and fitted with luxurious solid wood, glass, or upholstered tops. By choosing the upholstered top the coffee table can serve as an ottoman.

ADDITIONAL INFORMATION

MATERIALS

Powder coated steel bar base and steel plate top.

twentieth

sales@twentieth.net

323.904.1200

www.twentieth.net

FINISH

Flat or gloss black, white or yellow

DIMENSIONS

32": Dia 32" H 13 1/4"

42": Dia 42" H 12 1/4"

SPEC SHEET