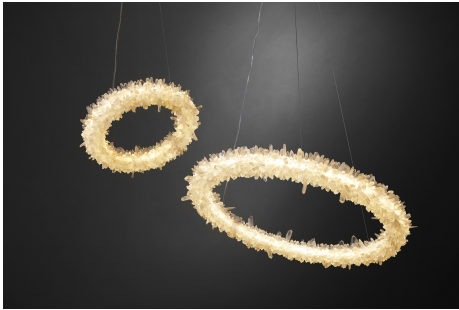


twentieth

Diamond Ring

Christopher Boots



DESCRIPTION

Circles have had supernatural resonance since Antiquity, embodying concepts of continuity and completion.

The magic ring draws power from its circular shape, an unbreakable border that both contains and concentrates energy.

In DIAMOND RING, quartz crystals appear to have bloomed from a circular frame.

The crystalline growth radiates like magical residue, following the inward and outward flow of circular energy.

Like an exploded geode, DIAMOND RING reveals the mysteries of nature.

[FINISHES](#) [CATALOG](#)

ADDITIONAL INFORMATION

MATERIALS

Quartz Crystal, Time, Love

FINISH

Clear Quartz

FIXTURE

Diamond Ring 450

Ø 17.7 x 5.1" (Ø 450 x 130 mm)

twentieth

sales@twentieth.net

323.904.1200

www.twentieth.net

41W

Diamond Ring 600

Ø 23.6 x 5.1" (Ø 600 x 130 mm)

55 W

Diamond Ring 900

Ø 35.4 x 5.1" (Ø 900 x 130 mm)

82 W

Diamond Ring 1200

Ø 47.2 x 5.7" (Ø 1200 x 150 mm)

109 W

Diamond Ring 1500

Ø 59 x 5.7" (Ø 1500 x 150 mm)

136W

Diamond Ring 1800

Ø 70.9 x 5.7" (Ø 1800 x 150 mm)

163W

Diamond Ring 2100

Ø 82.7 x 5.7" (Ø 2100 x 150 mm)

190 W

LAMPING

24V LED WW 2700K

SUSPENSION

Angled Cable

Vertical Cable

[SPEC SHEET](#) [PRICE SHEET](#) [WIRING DIAGRAM](#) [CARE GUIDE](#)

[CANOPY SPEC SHEET](#)