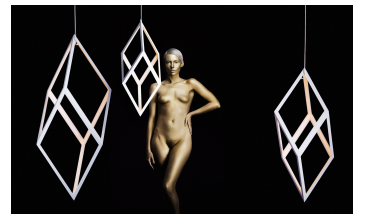
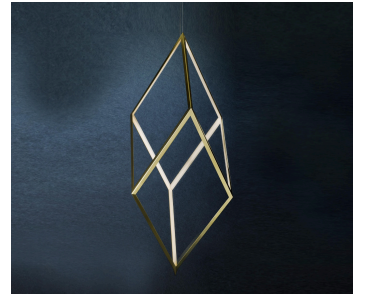


twentieth

Orp

Christopher Boots



DESCRIPTION

Oblique Rhombic Prism is a pared-back structure that allows sacred geometry and light to come together as one. ORP emphasises simplicity and form, connecting elements that speak to the links between all formations of life.

[FINISHES](#) [CATALOG](#)

ADDITIONAL INFORMATION

MATERIALS

twentieth

sales@twentieth.net

323.904.1200

www.twentieth.net

Brass or Iron, Aluminium, Gallium, Polymer

FINISH

Aged Brass, Hand Rubbed Brass, Brushed Stainless Steel, Dark Bronze, Mottled Patina, Powdercoat Matte Black, Powdercoat Matte White

SPECIAL FINISH

Polished Brass and Polished Stainless Steel available for a 20% upcharge

FIXTURES

Orp Small

13.7 x 15.9 x 33.8" (350 x 400 x 860 mm)

4872 LM

Approx. 5-7 kg

40 W

Orp Medium

19.6 x 22.7 x 48.2" (500 x 580 x 1225 mm)

6960 LM

Approx. 7-10 kg

58 W

Orp Large

25.5 x 29.5 x 62.6" (650 x 750 x 1590 mm)

9048 LM

Approx. 10-14 kg

79 W

Orp XXX

33.4 x 38.5 x 81.8" (850 x 980 x 2080 mm)

11472 LM

Approx. 13-18 kg

LAMPING

24 V / 2700K Warm White dimmable LED

VOLTAGE

24V DC

SUSPENSION

Vertical Cable

INCLUSIONS

Power Supply Unit x 150W

EXCLUSIONS

User Interface, Dimmer Unit

[SPEC SHEET](#) [PRICE SHEET](#) [WIRING DIAGRAM](#) [CARE GUIDE](#)

CANOPY SPEC SHEET