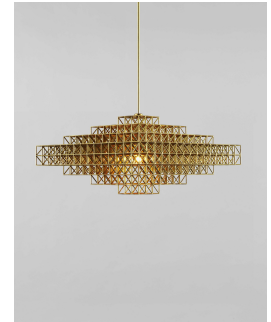


twentieth

## Gridlock Pendant ? 4059

Philippe Malouin



### DESCRIPTION

Raw and unpretentious, Gridlock is a series of lamps in the style of the Brutalist movement. Gridlock feels industrial in its straightforward, platonic forms and the repetitive efficiency of the grid, however, it is assembled entirely by hand from thousands of tiny parts. Philippe Malouin's tribute to the industry-inspired, labor-saving dreams of modernism is paid for in toil.

### ADDITIONAL INFORMATION

MATERIALS: Brass, Steel

FINISHES: Raw Brass, Nickel

twentieth

[sales@twentieth.net](mailto:sales@twentieth.net)

323.904.1200

[www.twentieth.net](http://www.twentieth.net)

DIMENSIONS: L 30in/76cm x W 30in/76cm x H 16in/41cm

WEIGHT: 44lb/20kg

LAMPING:

Integrated LED

Wattage: 23.6 Watts

Lumens: 2100 Lumens

Color Temperature: 2700 K, 90+ CRI

Dimming: Triac, ELV or 0-10V

SUSPENSION: 5/8-inch steel stem in matching metal finish. 35-inch length included with the lamp. 96-inch length available for an additional cost. Stem length can be adjusted on site.

CANOPY: 5-inch square in matching metal finish

CERTIFICATIONS: UL/cUL