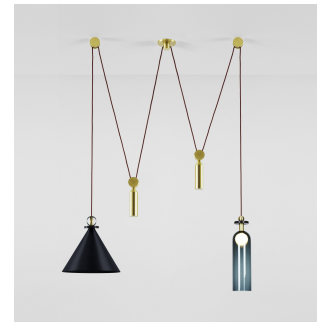


twentieth

Shape Up Double Pendant

Roll & Hill



DESCRIPTION

Shape Up by Ladies & Gentlemen Studio is a versatile lighting series that celebrates bold geometric shapes: the playful juxtapositions upend traditional notions of symmetry in favor of a dynamic spatial harmony. The modular system allows the shapes to be suspended and composed in response to a space's architecture and function, its shades discreetly networked via connecting cords and hubs.

ADDITIONAL INFORMATION

MATERIALS: Glass, steel, brass, aluminum

FINISHES:

twentieth

sales@twentieth.net

323.904.1200

www.twentieth.net

Cone: Brushed brass, brushed copper, blackened steel

Cylinder: Midnight blue

Cord Colors: Currant, black

DIMENSIONS: Overall dimensions variable.

Cone: L 13.5in/34cm x W 13.5in/34cm x H 13in/33cm

Cylinder: L 4.5in/11cm x W 4.5in/11cm x H 17.5in/44cm

WEIGHT: 20lb/9kg

LAMPING: 120V/240V - LED - G4 Sockets - 2.6 Watt, 12V LED - 5.2 Watts - 60 lumens - 2700K

SUSPENSION: 12-foot cord. Length can be adjusted on site

CANOPY: 5-inch round in brushed brass

HANGING HARDWARE: (2) 2 1/2-inch vertical round in brushed brass

DIMMER COMPATIBILITY: Electronic Low Voltage (ELV)

[SPEC SHEETS](#) [INSTALL GUIDES](#)