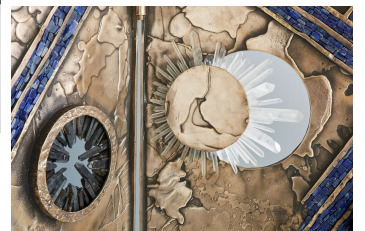
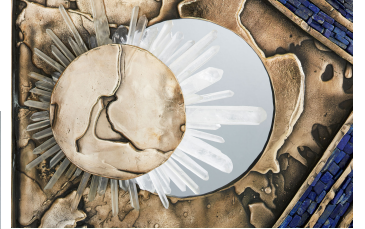


twentieth

Vanity Screen

Christopher Boots



DESCRIPTION

Christopher Boots created VANITY SCREEN by hand, for the pure joy of exploration of form, texture and a play on expressionism.

Unique piece in series of 8.

Presented at Collective Design in New York in May 2017, the room divider incorporates clear and smoky quartz crystal and lapis lazuli in contrast to a moon like surface cast in solid bronze.

ADDITIONAL INFORMATION

MATERIALS

twentieth

sales@twentieth.net

323.904.1200

www.twentieth.net

Cast Bronze, Clear Quartz Smoky Quartz, Lapis, Lazuli

FINISH

Patinated and Polished Bronze

DIMENSIONS

67" x 71" x 2.5 Ø (1700 x 1800 x 60 Ø)

WEIGHT

250 kg / 550 lb