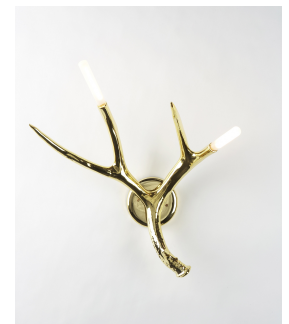


twentieth

Superordinate Antler Sconce

Jason Miller



DESCRIPTION

The Superordinate Antler Collection, designed in 2003, was influential in breaking the rigidness of contemporary modernism and initiating the back-to-nature movement in design. The natural environment offers such a breadth of beautiful forms, why not bring it indoors? The Superordinate Antlers are nature, made better.

ADDITIONAL INFORMATION

MATERIALS: Ceramic

FINISHES: White, black, chrome, gold

twentieth

sales@twentieth.net

323.904.1200

www.twentieth.net

DIMENSIONS: H 20in/51cm x W 17in/44cm x D 10in/26cm

WEIGHT: 2lb/1kg

LAMPING:

120V - 2 x 25 Watt T6½ intermediate base - E17 Socket - 50 Watts - 340 lumens - 2700K

240V - 2 x 18 Watt eco-halogen matte white candelabra base - E14 Socket - 36 Watts - 400 lumens - 2700K

BACKPLATE: 5-inch round in matching finish

DIMMER COMPATIBILITY: Triac/Phase-Cut