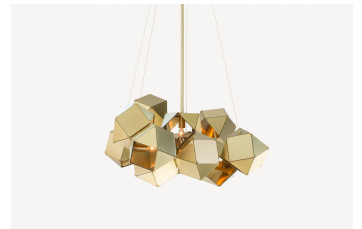


twentieth

Welles Central Chandelier

Gabriel Scott



DESCRIPTION

Made up of a sequence of interconnected geometric shapes, the WELLES is a modular and customizable lighting-system that forms sculptural and organic shapes in all its various configurations and silhouettes. From long branches to large clusters, the nature of this metallic light-fixture allows for infinite silhouette options.

All Gabriel Scott pieces are handmade in Canada.

ADDITIONAL INFORMATION

FINISHES:

twentieth

sales@twentieth.net

323.904.1200

www.twentieth.net

Exterior: White, Black, Satin Brass, Satin Copper, Satin Nickel

Interior: Satin Brass, Satin Copper, Satin Nickel

DIMENSIONS: 28" D x 16" H + stem

WEIGHT: 3lbs per cube

LAMPING: 12V 3 Watt LED bulb (included)

STANDARD STEM LENGTH: 6", 12", 18" or 24"

ADDITIONAL STEM LENGTH (up-charge applies): 30", 36", 42" or 48"

LED DRIVER: E60R12DC (110V) / UVC50TD (220V)

CANOPY: Standard 5" canopy / Long-Canopy (extra charge)

SPEC SHEET	INSTALLATION GUIDE	PRODUCT CARE GUIDE
----------------------------	------------------------------------	------------------------------------