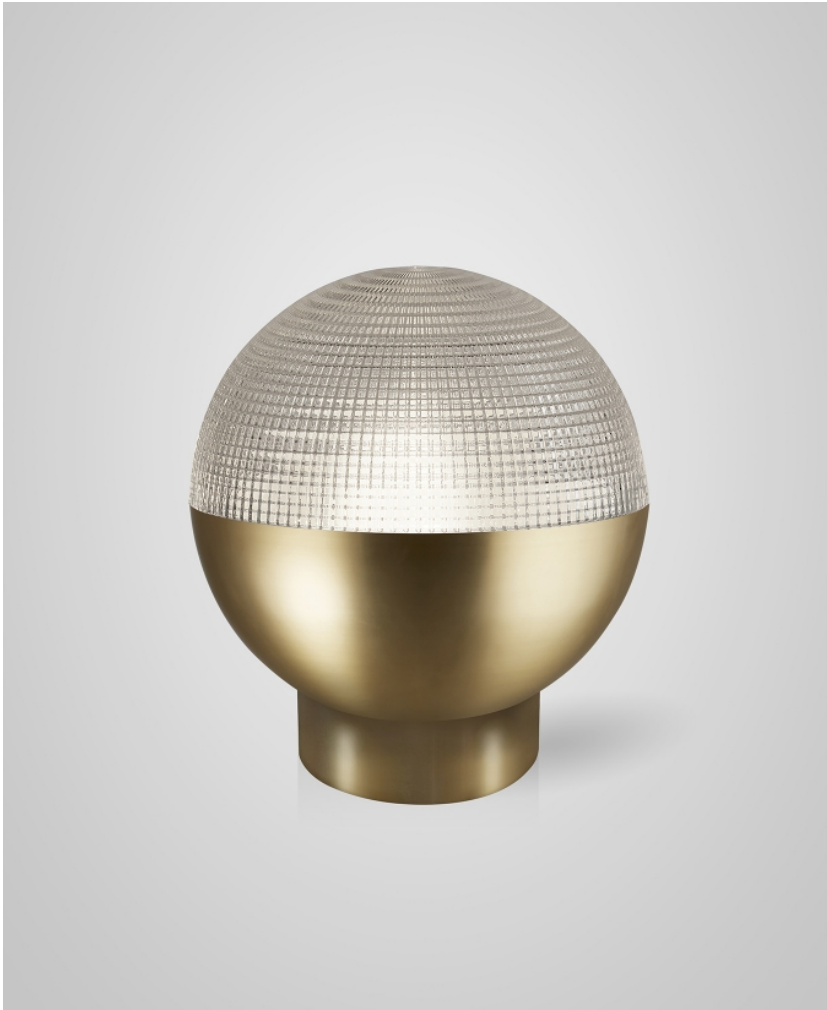


twentieth

Lens Flair Table Lamp

Lee Broom



DESCRIPTION

Inspired by telescopic lenses and the art of horizontal and vertical refractions, Lens Flair is a piece of two halves, seamlessly combining the solid and the transparent. A detailed cross-cut lens emits a soft deflected light, which is juxtaposed by contemporary solid casing in brushed brass or matte black finishes.

This new piece is available as a Pendant Light and Table Lamp. Lens Flair makes a bold statement by itself, or multiple pendants can be hung to create a celestial installation.

CATALOG

ADDITIONAL INFORMATION

MATERIALS: Steel, polycarbonate

DIMENSIONS: H 45cm x Dia 40cm / H 17.75 in x Dia 15.75 in

FINISH: Brushed Brass or Matte Black with clear prismatic lens

CORD: 200cm / 118 1/8 in, gold or black fabric outer with inline dimmer switch

ILLUMINATION:

E27: 7.5w, 2700k, 700 lumen (Dimmable LED bulb supplied)

E26: 7w, 2700k, 700 lumen (Dimmable LED bulb supplied)

VOLTAGE: 220-240v or 110-130v

SPEC SHEET