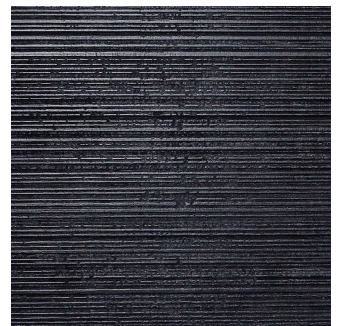


twentieth

9 Rectangles Cabinet

John Eric Byers



DESCRIPTION

This monolithic cabinet from John Eric Byers merges bold, modern geometries with traditional craft. The wood is hand sawn and lacquered with a distinctive textured pattern to give a sophisticated finish to a simplified silhouette.

ADDITIONAL INFORMATION

MATERIAL

Solid maple and ash

FINISH

twentieth

sales@twentieth.net

323.904.1200

www.twentieth.net

Sawn and blackened

DIMENSIONS

65" H x 45" W x 15" D