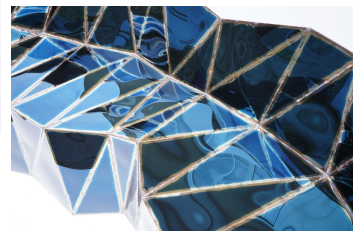
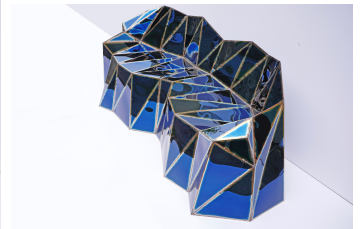
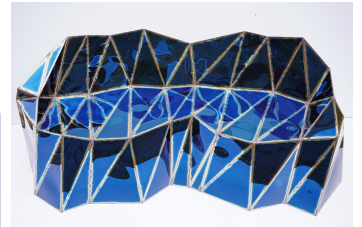
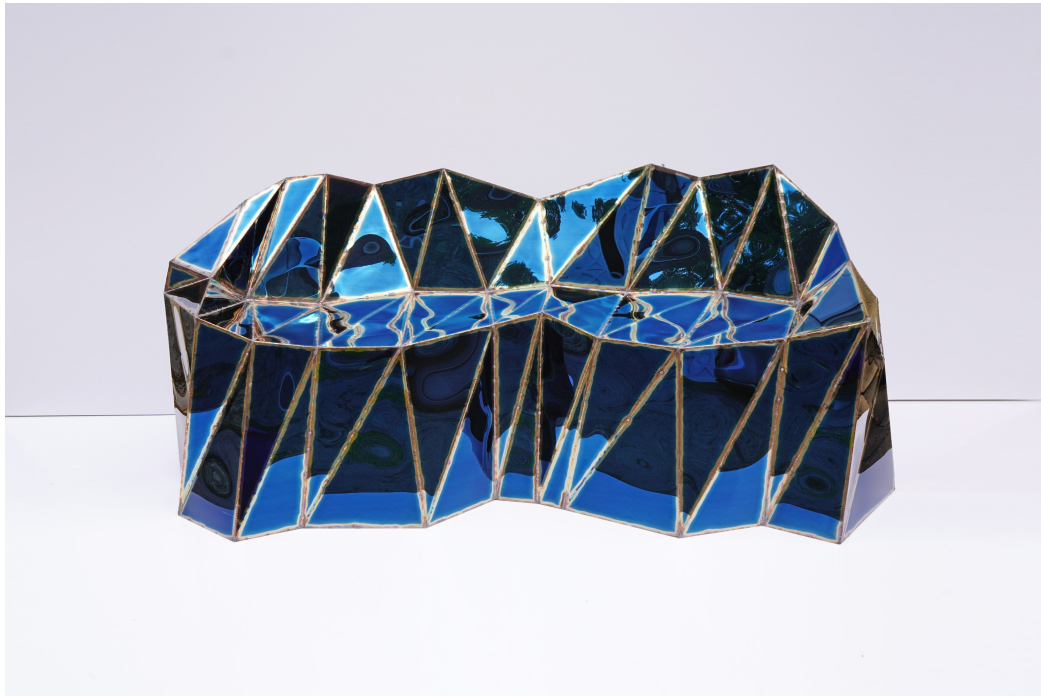


twentieth

Glenda Settee

Julian Mayor



DESCRIPTION

Mayor digitally designs his pieces using sophisticated CAD applications and then meticulously hand-makes each one using traditional welding techniques. The surfaces are mirror smooth anodized stainless steel that warp and twist when the seams are welded and then left raw, allowing a viewer to experience and understand the craftsmanship behind the construction. Mayor's technique is inspired by the sculptural possibilities of a high-tech approach while also embracing the idiosyncrasies and individuality of the hand-made.

ADDITIONAL INFORMATION

Title: Glenda (settee)

Dimensions: H28.3" x W68.1" x D30.7"

twentieth

sales@twentieth.net

323.904.1200

www.twentieth.net

Material: Welded mirror polished stainless steel

Finish: Sapphire

Origin: United Kingdom

Year: 2019

Editions: 8