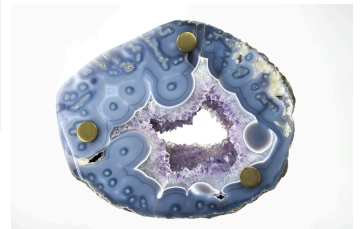
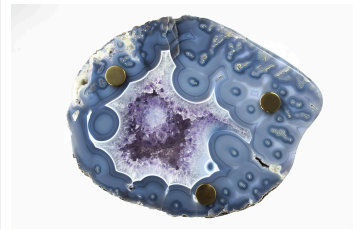


twentieth

Powers Of 10 Cocktail Table

Christopher Kreiling



DESCRIPTION

Zoom in and get lost in the beauty of these high-polished natural quartz crystal table tops pierced by solid brass legs. The 'Powers of 10' Cocktail Tables are heavy and one-of-a-kind. Each one has a unique shape and otherworldly color palette. The hand-turned brass galactic legs are meticulously engineered to create leveled tabletops.

ADDITIONAL INFORMATION

DIMENSIONS

Dimensions Variable x 20" H

twentieth

sales@twentieth.net

323.904.1200

www.twentieth.net

MATERIALS

Polished One-of-a-kind Quartz Slab, Solid Brass Legs

VARIATIONS

Polished Solid Brass or Patinated Solid Brass