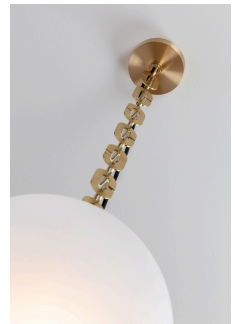
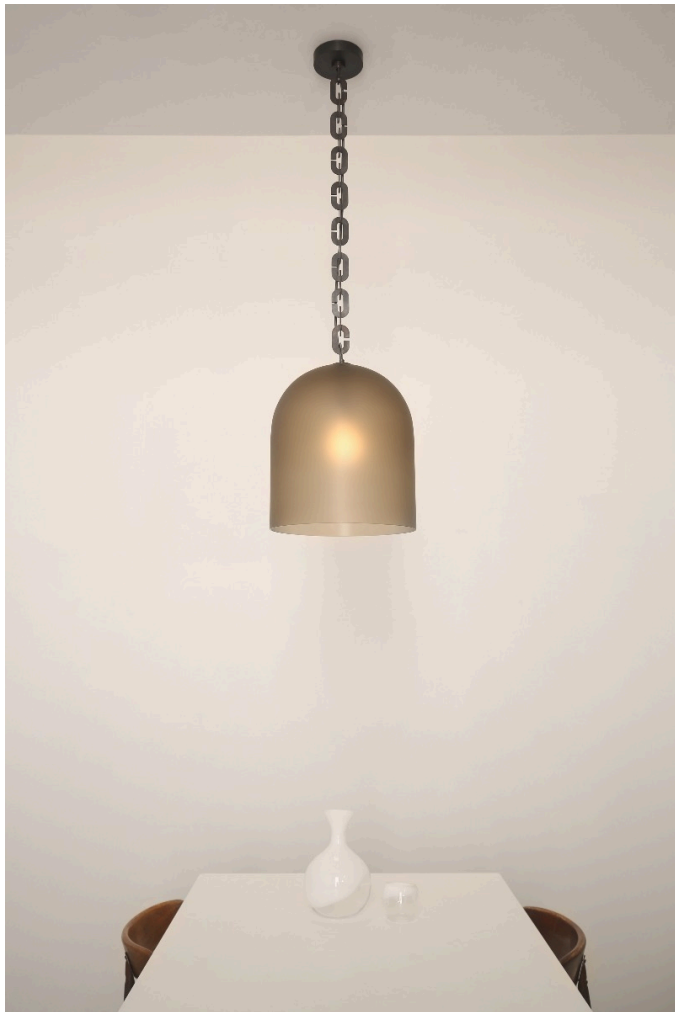


twentieth

Dome Pendant

SKLO



DESCRIPTION

Large domes of handblown Czech glass with a frosted finish are suspended on lengths of oversized brass chains. An exposed fabric-wrapped electrical cord runs through the chain from canopy to light.

Made in the Czech Republic

ADDITIONAL INFORMATION

DIMENSIONS

17" H x 13" Ø

22.5" H x 17" Ø

twentieth

sales@twentieth.net

323.904.1200

www.twentieth.net

MATERIALS

Handblown Czech glass

VARIATIONS

Glass: Frosted Clear, Frosted Smokey Brown, Frosted White

Metal: Dark Oxidized, Brushed Brass, Brushed Nickel, Polished Nickel

ELECTRICAL

120V E26 60W Max

LED bulbs included

UL listed suitable for dry and damp locations (US & Canada)

[SPEC SHEETS](#) [INSTALL GUIDE](#)