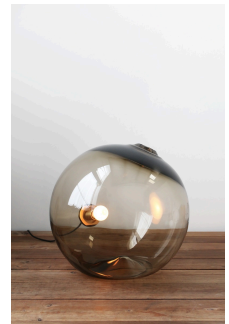
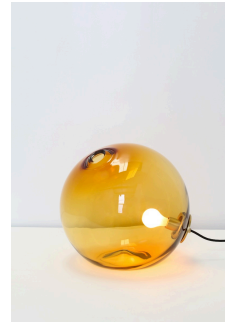


twentieth

Float 2.0 Light

SKLO



DESCRIPTION

Large spheres of handblown Czech glass with a custom brass socket assembly through one side. Each glass sphere is blown by hand without the use of moulds, and so is slightly imperfect in shape. Available in two sizes. Each is broken hot from the blower's pipe and the mouth then fire-polished to create an uncontrollable detail unique to each piece. Two brass thumb screws attach the removable bulb-and-socket from the side of the glass.

Made in the Czech Republic

ADDITIONAL INFORMATION

DIMENSIONS

16" Ø

20" Ø

MATERIALS

Handblown Czech glass

VARIATIONS

Glass: Amber, Clear, Smoke, Smokey Brown, White

Metal: Dark Oxidized, Brushed Brass, Polished Nickel, Brushed Nickel

ELECTRICAL

120V E26 7W Max

LED bulb included

UL listed suitable for dry locations only (US & Canada)

[SPEC SHEETS](#) [INSTALL GUIDE](#)