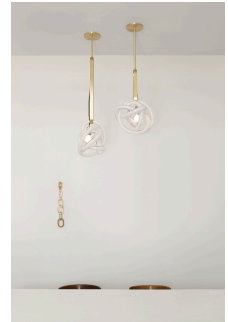


twentieth

Wrap Pin Pendant

SKLO



DESCRIPTION

Our signature SKLO Large Wrap, a continuous wound length of the handblown Czech glass tube, is featured on the Wrap Pin Pendant. The glass element hangs from a brass "pin" element, made of a continuous ribbon of a brass bar, which opens and closes to allow for removal of the glass. The brass socket is suspended on an exposed fabric-wrapped electrical cord from the top of the "pin" and suspends the light bulb within the opening at the top of the glass. The "pin" element is available in two lengths.

Made in the Czech Republic

ADDITIONAL INFORMATION

DIMENSIONS

18" H x 11" Ø (Wrap Pin 1.09)

30" H x 11" Ø (Wrap Pin 1.21)

MATERIALS

Handblown Czech glass

VARIATIONS

Glass: Amber, Clear, Gray, New Blue, Smoke, Steel Blue, White, Silver Mirror

Metal: Dark Oxidized, Brushed Brass, Brushed Nickel, Polished Nickel

ELECTRICAL

120V E26 60W Max

LED bulbs included

UL listed suitable for dry and damp locations (US & Canada)

SPEC SHEETS