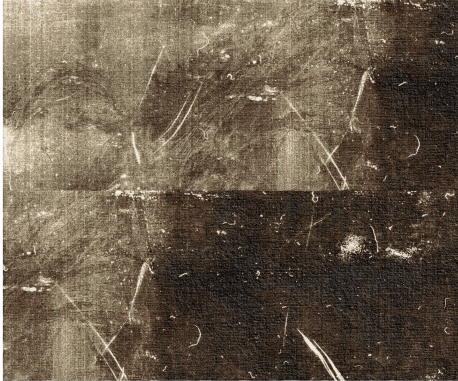


twentieth

Conjoined

Temple rugs



DESCRIPTION

Each colorway of CONJOINED is named for historically notable conjoined twins.

ADDITIONAL INFORMATION

DIMENSIONS

Made to order, custom

MATERIALS

Silk and Tibetan wool

High pile, with low pile details

Knots per square inch: 150

[SPEC SHEET](#)