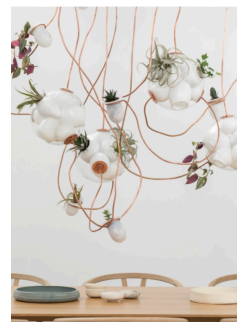
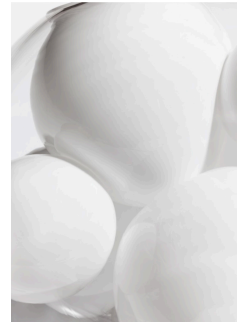


twentieth

38 Copper

Bocci



DESCRIPTION

38 SERIES

38 pushes the fabrication technique originally developed for 28 to its technical and material limits. A large glass sphere is blown with a multitude of haphazard interior cavities, which intersect and collide with each other in unpredictable ways. Several of these satellite cavities are deep enough to hold earth and succulent or cacti plantings, while others house lighting elements. Each 38 contains two or three lighting elements per large sphere, housing either a 10-watt xenon or a 1.5-watt LED lamp, and one or two planters.

CATALOG

ADDITIONAL INFORMATION

SIZE

38.3m: Single clear pendant with three light sources and two moons.

38.3: Single clear pendant with three light sources and two moons.

38.11: One clear pendant with two light sources, three clear pendants with three light sources, and eight moons. Eleven light sources in total.

38.16: Four clear pendants with three light sources, two clear pendants with two light sources, and twelve moons. Sixteen light sources in total.

38.28: Eight clear pendants with three light sources, two clear pendants with two light sources, and twenty moons. Twenty-eight light sources in total.

DIMENSIONS

Pendant: 8.5" - 10"Ø

MATERIALS

Blown Glass, Copper Canopy, Electrical Components, Flexible Copper Tubing, Copper Hardware

CONNECTION + DROP

(10') standard - (100') maximum

Non-adjustable: 38.3m, 38.3, 38.11, 38.16, 38.28

Coax maximum length: 32'

\$100 - Extra coax lengths - per 10' increment

LAMPING

1.5w LED: 2000K, 2500K or 3500K

CANOPY

Brushed nickel, Black or White powder coated adjustable lengths canopy

38.3m: 2.3" Ø round canopy

38.3: 5.9" Ø round canopy

38.11: 33.46" x 11" rectangular canopy

38.16: 43.3" x 14.5" rectangular canopy

38.28: 51.96" x 17.4" rectangular canopy

CUSTOM

Available

[SPEC SHEETS](#) [VIEW BOOK](#) [INSTALL GUIDES](#) [3D FILES .ZIP](#)