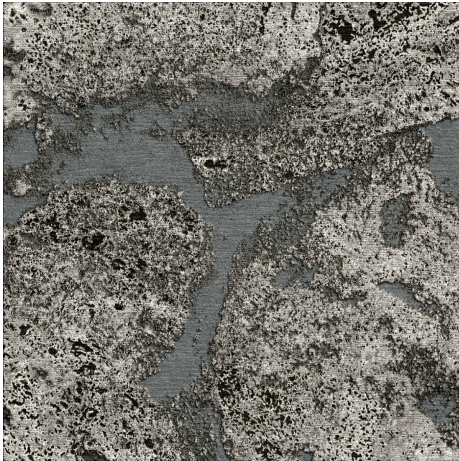


Boron

Temple rugs



DESCRIPTION

Fifth on the Periodic Table of Elements, BORON is a hard black element, heavily textured with facets and shimmering with flecks of iridescence. The explosion of colors and finely detailed textures in the rug are borrowed from the element.

Hand-knotted in Nepal.

ADDITIONAL INFORMATION

DIMENSIONS

Custom sizing available

MATERIALS

Tibetan wool and silk

Low and high pile heights

Knots per square inch: 150

Colorways: Atomic Power Generation, Aerospace Structures, Glass, Fiberglass, Pyrotechnic Flares

[SPEC SHEET](#)