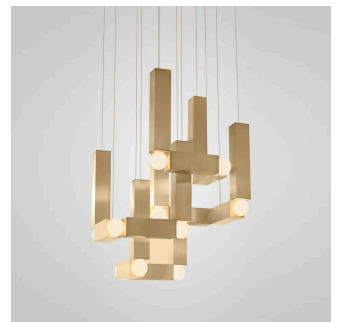
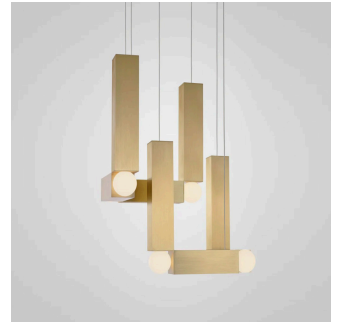


# twentieth

## Vesper

Lee Broom



### DESCRIPTION

Vesper is inspired by the simple geometric lines of Brutalist sculpture and modernist cathedral lighting. Formed with extruded aluminum and available in anodized gold or silver, Vesper explores the delicate balance and interconnection of its rectangular cubes that are seamlessly connected by illuminated spheres. The light sculpture, which is suspended by cables, is available in both Duo and Quattro versions.

---

CATALOG

## ADDITIONAL INFORMATION

### **DOU**

Dimensions: H 52 cm x W 3 cm x L 52 cm

Finish: Brushed Gold or Brushed Silver

Materials: Aluminium / Opal glass

Cable: 6 x 3m cord with clean casing

Illumination: 9.6w, 2700k, 960lm

Voltage: 220-240v or 110-130v

### **QUATTRO**

Dimensions: H 75 cm x W 58 cm x L 58 cm

Finish: Brushed Gold or Brushed Silver

Materials: Aluminium / Opal glass

Cable: 12 x 3m cord with clear casing

Illumination: 19.2w, 2700k, 1920lm

Voltage: 220-240v or 110-130v

---

DUO SPEC SHEETS	QUATTRO SPEC SHEETS	3D FILES .ZIP
-----------------	---------------------	---------------