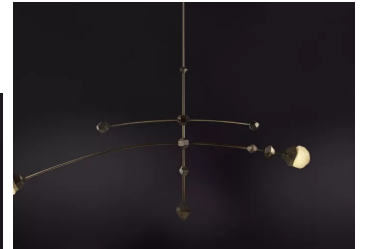


twentieth

Crux

Christopher Boots



DESCRIPTION

CRUX explores the natural geometries of the five stars that form the Southern Cross - one of the most recognisable constellations in the southern sky.

CRUX reflects the unique formation of the Southern Cross, symbolising guidance and navigation through the night sky. Four stars produce a gentle illumination through undulating glass elements, as they gently suspend amongst the cast brass matter of deep space.

The CRUX collection comprises one sconce and two pendant variations.

ADDITIONAL INFORMATION

MATERIALS: Hand blown glass / Sand cast brass

FINISHES: Aged Brass, Brushed Brass, Hand Rubbed Brass, Dark Bronze, Mottled Patina.

DIMENSIONS: 78.3" x 10.3" x 5.5"

LAMP: 12V LED WW 2700K

VOLTAGE: 12V DC

WATTS: 8W

WEIGHT: Approx. 22lb

INCLUDED: Power Supply Unit x 30W

WARRANTY: 5 yrs Fixture / 5 yrs Power Supply / 5 yrs LED