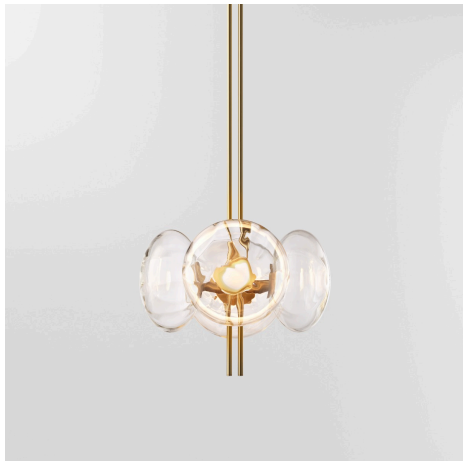


twentieth

Aeris Chandelier Small

Ross Gardam



DESCRIPTION

Inspired by the ethereal beauty of clouds, Aeris embodies softness and lightness through the repetition of sculptural forms, crafting an ethereal centerpiece. Each mouth blown glass cloud is paired with architecturally crafted brass bars that cross and lightly kiss together, evoking a sense of weightlessness—as if suspended in air.

The duality of the brass structural element defines each piece, with dual vertical drops playfully interacting with horizontal crossings, creating a unity to the entire fixture.

ADDITIONAL INFORMATION

MATERIALS: Treated Brass, Glass

DIMENSIONS: L 18.1" W 18.1" H 13.8"

FINISH OPTIONS: Frosted Black, Frosted Clear, White, Black, Brushed Brass, Brushed Blackened Brass, Brushed Bronze Brass

LAMPING: SELV 60V (EXTERNAL DRIVER SUPPLIED) AE104 10.8W, 2700K AE112 32.4W, 2700K

CANOPY: Slim, Puck, Large

CERTIFICATION: UL1598, CSA C22.2#250.0

Custom options available. Please contact sales@twentieth.net for more information

twentieth

sales@twentieth.net

323.904.1200

www.twentieth.net