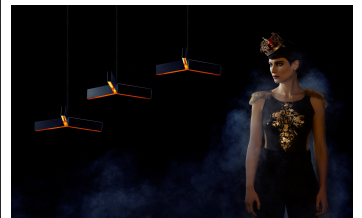


twentieth

Bucky Block

Christopher Boots



DESCRIPTION

Inspired by Buckminster Fuller's geodesic dome, BUCKY explores natural geometry and industrial innovation.

BUCKY is a striking pendant constructed from blackened steel and gold leaf.

Designed to hang in clusters, BUCKY'S subtle channels of light become a beacon of warmth.

[FINISHES](#) [CATALOG](#)

ADDITIONAL INFORMATION

FINISH

Powder Coat Matte Black, Gold Leaf

MATERIALS

Iron Carbon Gold Polymer Glass

DIMENSIONS

Ø 42.5 x 5.9" (Ø 1080 x 150 mm)

LAMP

S14s 120V 6W 2700K Linear LED

S14s 240V 9W 2700K Linear LED

LUMENS

1350 / 1350 LM

VOLTAGE

120 / 240 V

WATTS

18 / 27 W

WEIGHT

Approx. 11 kg

[SPEC SHEET](#) [PRICE SHEET](#) [WIRING DIAGRAM](#) [CARE GUIDE](#)
[CANOPY SPEC SHEET](#)