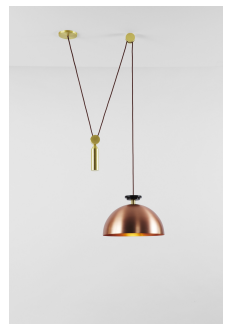
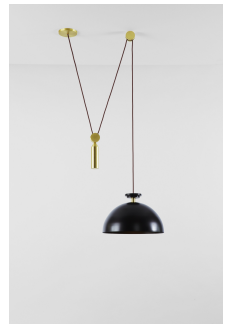


twentieth

Shape Up Pendant - Hemisphere

Roll & Hill



DESCRIPTION

Ladies & Gentlemen Studio for Roll and Hill.

Shape Up is a versatile lighting series celebrating geometric shapes. These playful collages upend traditional notions of symmetry in favor of a dynamic spatial harmony. The collection's abstracted shades are networked via connecting cords and hubs. The resulting modular system allows the shapes to be suspended and composed in response to a space's architecture and function.

ADDITIONAL INFORMATION

MATERIALS: Aluminum, brass, steel

twentieth

sales@twentieth.net

323.904.1200

www.twentieth.net

FINISHES:

Metal Shade: Blackened steel, brushed brass, brushed copper

Cord Colors: Currant, black

DIMENSIONS: Overall dimensions variable.

Shade: L 16in/41cm x W 16in/41cm x H 10in/26cm

WEIGHT: Fixture: 10lb/4.5kg

LAMPING: 120V/240V LED - 2.6 Watt, 12V LED - G4 Socket - 30 lumens - 2700K

SUSPENSION: 12-foot fabric cord. Length can be adjusted on site

CANOPY: 5-inch round in brushed brass

HANGING HARDWARE: 2 1/2-inch vertical round in brushed brass

DIMMER COMPATIBILITY: Electronic Low Voltage (ELV)

[SPEC SHEETS](#) [INSTALL GUIDES](#)