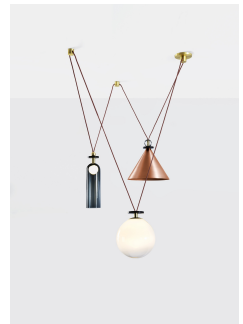
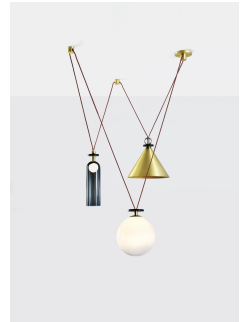


twentieth

## Shape Up 3-Piece Chandelier

Roll & Hill



### DESCRIPTION

Ladies & Gentlemen Studio for Roll and Hill.

Shape Up is a versatile lighting series that celebrates bold geometric shapes: the playful juxtapositions upend traditional notions of symmetry in favor of a dynamic spatial harmony. The modular system allows the shapes to be suspended and composed in response to a space's architecture and function, its shades discreetly networked via connecting cords and hubs.

### ADDITIONAL INFORMATION

MATERIALS: Glass, steel, brass, aluminum

twentieth

[sales@twentieth.net](mailto:sales@twentieth.net)

323.904.1200

[www.twentieth.net](http://www.twentieth.net)

FINISHES:

Metal Shade: Blackened steel, brushed brass, brushed copper

Cylinder: Midnight blue

Globe: Gray fog

Cord: Currant, black

DIMENSIONS: Overall dimensions variable.

Globe: L 11in/28cm x W 11in/28cm x H 12.5in/32cm

Cylinder: L 4.5in/11cm x W 4.5in/11cm x H 17.5in/44cm

Cone: L 13.5in/34cm x W 13.5in/34cm x H 13in/33cm

WEIGHT: 33lb/15kg

LAMPING: 120V/240V - G4 Sockets - 2.6 Watt, 12V LED - 5.2 Watts - 110 lumens - 2700K

SUSPENSION: 12-foot fabric cord. Length can be adjusted on site

HANGING HARDWARE: (2) 2-inch round hubs in brushed brass

CANOPY: 5-inch round in brushed brass

DIMMER COMPATIBILITY: Electronic Low Voltage (ELV)

---

[SPEC SHEETS](#) [INSTALL GUIDES](#)