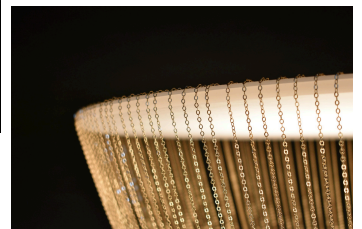


twentieth

Celeste - Large

Larose Guyon



DESCRIPTION

In Southeast Asia, the sky lantern symbolizes lightness and hope for lovers. During traditional festivities, thousands of the paper lanterns float into the sky, filling it with magic and poetry in motion.

The design of Larose Guyon's Céleste lamp is inspired by the sky lantern's delicate character. Suitable for use alone or in groups, and available in two different sizes, the lamp is a gem that evokes the magic of sky lanterns anywhere it is viewed.

It casts a soft glow, thanks to indirect light from the interior reflected and scattered by the hundred jewellery chains it is made from. With every change in perspective, a viewer will see countless shimmering points of light.

ADDITIONAL INFORMATION

FINISHES: Aged Brass, Aged Copper, Satin Nickel, Satin Black

DIMENSIONS: 30" x 30" x 30" H

WEIGHT: 25 lbs

LED SOURCE: 3000K - 2 376 Lumens - 61.9 Watts - Dimmable driver

COMPATIBLE DIMMER (Not included): Lutron Diva DVCL-153P or equivalent

STEM LENGTH: 12", 18", 24" or 36". Up-charge applies to additional lengths.

CANOPY: 7" (standard) / 5" (available on request)

SPEC SHEETS	INSTALL GUIDE	2D FILES .DWG	3D FILES .SKP
-----------------------------	-------------------------------	-------------------------------	-------------------------------