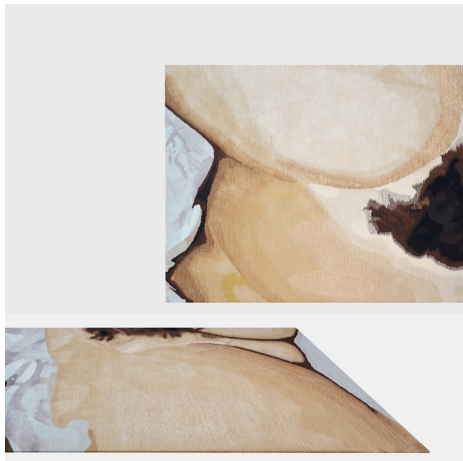


twentieth

Untitled By Douglas Gordon

Henzel Studio



DESCRIPTION

Hailed as one of the most prominent artists of his generation to emerge from Britain, Gordon's work spans across many different forms of media. Throughout his career he has utilized photography, text, sculpture, and perhaps most significantly film, with which he produced a series of video installations based on iconic films including Alfred Hitchcock's *Psycho*, John Ford's *The Searchers*, and Martin Scorsese's *Taxi Driver*. Gordon's work is meant to abstract what we think we know and understand, and through that abstraction creates a new experience for the human memory to process and approach what it has previously witnessed. Collected by major institutions such as Tate in London, Museum of Modern Art (MoMA) in New York and San Francisco Museum of Modern Art (SFMOMA). For HENZEL STUDIO, Douglas Gordon created a two panel composition as an homage to Courbet's painting *L'Origine du Monde*.

ADDITIONAL INFORMATION

DOUGLAS GORDON

Untitled, 2013

Edition of 50 + 1 AP

Numbered

Accompanied by a Certificate of Authenticity

DIMENSIONS

Small | 55" W x 94.5" D

Large | 70.5" W x 94.5" D

Custom size upon request

MATERIALS

Bamboo Silk, Mulberry Silk
Hand tufted Wool & Silk