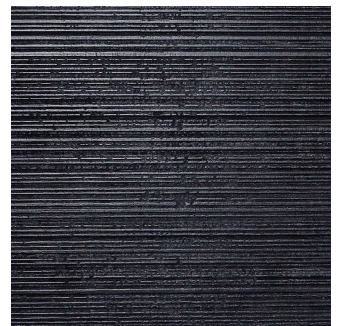


twentieth

## 9 Rectangles Cabinet

John Eric Byers



### DESCRIPTION

This monolithic cabinet from John Eric Byers merges bold, modern geometries with traditional craft. The wood is hand sawn and lacquered with a distinctive textured pattern to give a sophisticated finish to a simplified silhouette.

### ADDITIONAL INFORMATION

#### MATERIAL

Solid maple and ash

#### FINISH

twentieth

[sales@twentieth.net](mailto:sales@twentieth.net)

323.904.1200

[www.twentieth.net](http://www.twentieth.net)

Sawn and blackened

DIMENSIONS

65" H x 45" W x 15" D