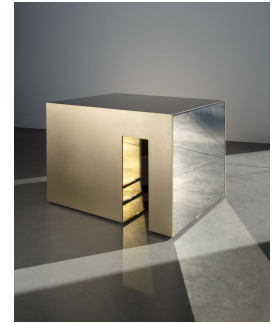


twentieth

## Reflexive Void

Daniele Albright



### DESCRIPTION

Reflexive void is a series of sculptural tables that explores mass and voids. Each work is a unique rectilinear cube-like form that contains a voided space. Combining hand formed solid tobin bronze with mirrored glass surfaces, the result is an interplay of solidity and weightless, disappearing surfaces.

Each table is a unique variant of a series.

### ADDITIONAL INFORMATION

#### MATERIALS

Tobin bronze, bronze mirrored glass

twentieth

[sales@twentieth.net](mailto:sales@twentieth.net)

323.904.1200

[www.twentieth.net](http://www.twentieth.net)

DIMENSIONS

24.5" x 19.5" x H 18.5"

Handmade in Los Angeles