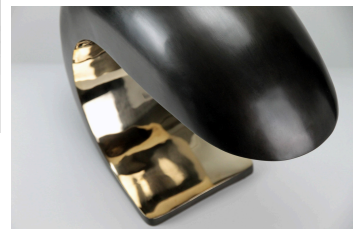


twentieth

## Nautilus Table Lamp

Christopher Kreiling



### DESCRIPTION

The Nautilus Study table lamp is inspired by Mid-Century Italian design. It is cast bronze and weighs up to 28 pounds. The outer shell has a blackened patina, and the face is high polished to a mirrored finish. The Nautilus illuminates by a three-way touch sensor anywhere on the body. The face, only being waxed, will take on the fingerprints of its owner. Time is noted by its markings and continually changing patina. A deep brown fabric covered cord is at the back bottom. A 60W medium base bulb is recommended. The Nautilus works well in pairs as bedside table lamps, on dining room consoles, as well as multiples on a bar top.

The Nautilus Study Table Lamp was featured on the cover and three pages of Ellen DeGeneres' 'Home' book.

## ADDITIONAL INFORMATION

### DIMENSIONS

6.5" W x 13.5" D x 11" H

9.5" W x 18" D x 16" H

### MATERIALS

Cast Bronze, Patinated Exterior, Polished and Waxed Face

### VARIATIONS

Polished and Patinated Bronze or Polished and Patinated Stainless Steel

### ELECTRICAL

E26 bulb base

3-way US touch dimmer