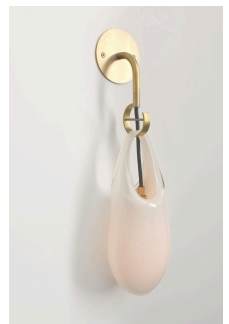


twentieth

## Hold Sconce

SkLO



### DESCRIPTION

An expressive glass vessel that appears to droop from its hook as if molten serves as a shade on this wall sconce. Available in two sizes. The socket is suspended from the hook on a fabric-wrapped electrical cord and is loosely suspended within the glass. A removable threaded pin within the brass hook can be used to secure the glass if required.

Made in the Czech Republic.

### ADDITIONAL INFORMATION

#### DIMENSIONS

twentieth

[sales@twentieth.net](mailto:sales@twentieth.net)

323.904.1200

[www.twentieth.net](http://www.twentieth.net)

5" W x 5.5" D x 18" H

8" W x 5.5" D x 26" H

#### MATERIALS

Handblown Czech glass

#### VARIATIONS

Glass: Clear, Gray, New Blue, Olivin, Smoke, White

Metal: Dark Oxidized, Brushed Brass, Brushed Nickel, Polished Nickel

#### ELECTRICAL

120V G9 7W Max (Small)

120V E26 60W Max (Large)

LED bulb included

UL listed suitable for dry locations only (US & Canada). Available for damp locations by request

---

#### SPEC SHEETS