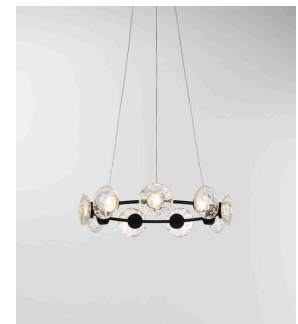
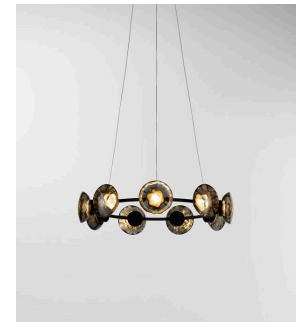


twentieth

Ceto Circlet

Ross Gardam



DESCRIPTION

Ceto Circlet captures the variation and rippling of the surface of the ocean. Each piece is mouth blown, reflecting a distinct pattern that emits a delicate luminosity, evoking the presence of the sea and its undulating movements. The Ceto Circlet collection features a circular band suspended in a horizontal plane, to which several Ceto lamps are affixed.

Each glass shade is mouth blown in Australia and hand assembled in our Melbourne based studio. This sculptural luminaire is available in a selection of glass finishes combined with a highly refined machined aluminium body and circular band available in a black and champagne anodised finish.

ADDITIONAL INFORMATION

Each glass shade is mouth blown and the colour and ripple will supply slightly different light diffusion. There are also slight variations in ripple and colour across each glass piece.

For 220-240V low-voltage option, a small remote driver is supplied which needs to be housed in a wall/ceiling cavity close to the fitting. Once your order is processed, we will be in touch to confirm your driver needs.

AU/NZ	AS/NZS 60598.1, 60598.2.1
EU	EN 60598.1, 60598.2.1
US/CAN	ETL/UL CERTIFICATION PENDING