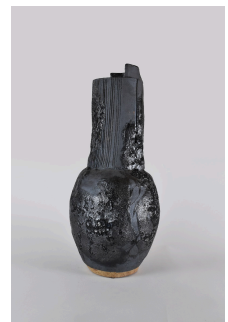


twentieth

Caroline Blackburn - "391"

Caroline Blackburn



DESCRIPTION

Stoneware clay, high fire Caroline has a wide vocabulary of glazes with which she uses to accomplish the intense active surface in each piece. She juxtaposes color, texture and drawing using a variety of materials to accomplish a painterly surface including ceramic pencil, slip, oxide, or glaze creating a sublime effect, reflecting phenomenon found in nature.

ADDITIONAL INFORMATION

12-1/2" H x 7-1/2" W