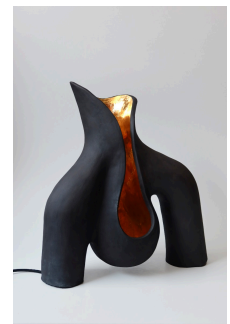
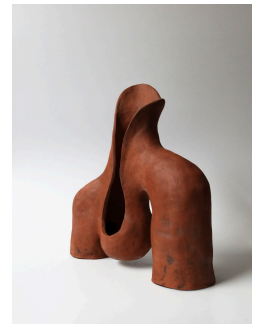


twentieth

Womb Lamp 02

Jan Ernst



DESCRIPTION

The WOMB lighting collection evokes our deep-seated feeling of 'the primal' and unlocks the unknown potential that is hidden in the cavities of our world while celebrating life through luminescence. "Walking these ancestral grounds prompts a feeling of reverence and mystique for the people who once inhabited the interleaving Stadsaal Caves. Tremendous voids and cracks shaped by the natural elements created shelter for the first humans who settled in this region. I was fascinated and humbled to witness such signs of life depicted through intricate murals on the cave walls. These moments spent in the caves were a revelation for me on both a personal and artistic level, and inspiration for the new collection."

ADDITIONAL INFORMATION

MATERIAL / white stoneware, terracotta, black clay

45 X 50 X 22 CM

LOCATION / Cape Town, South Africa