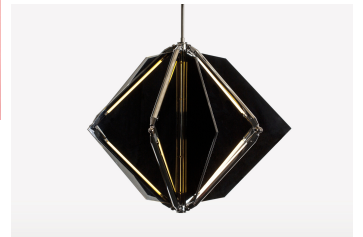
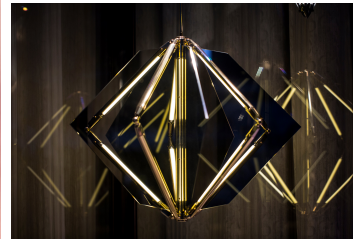


twentieth

Echo 1

Bec Brittain



DESCRIPTION

Echo uses mirrored fins, radiating from a central axis, to reflect beams of light. LED tubes are turned inward to bounce off the mirror, thereby softening and amplifying that light. The echo is also available with glass fins, which diffuse the light, creating a soft glow.

CATALOG

ADDITIONAL INFORMATION

MATERIALS

Finished Brass, Glass/Mirror

FINISH

Brushed Brass, Bronze, Satin Nickel, Nickel Brass Contrast

Special Order Finishes (10% upcharge applies): Polished Brass, Medium Antique Brass, Polished Nickel, Dark Pewter, Polished Black Nickel, Polished Copper, Smoky Copper

Glass Finishes: Clear Mirror, Bronze Mirror, Grey Mirror

DIMENSIONS

34" Ø x 24" H / 86cm Ø x 61cm H

WEIGHT

41 lb / 18.6 kg

LAMPING

24 VDC T5 LED tube

2700 Kelvin

90 CRI

SUSPENSION

1/8 IP steel stem clad in brass tubing with matching metal finish up to 35-inch length included with fixture. Length up to 95 inches available for an additional cost.

INSTALLATION

Remote:

120V Dimming: C-L (Lutron) switching

240V Dimming: 0-10V hardwired

Local:

120V Dimming: C-L (Lutron) switching

240V Dimming: 0-10V wireless (Lutron Pico)

ELECTRICAL

Wattage: 30 Watt

Lumens: 2400 Lumens

110 - 240 VAC input voltage

277 VAC upon request

SPEC SHEETS