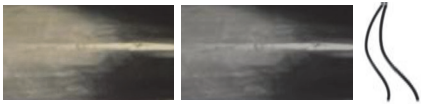
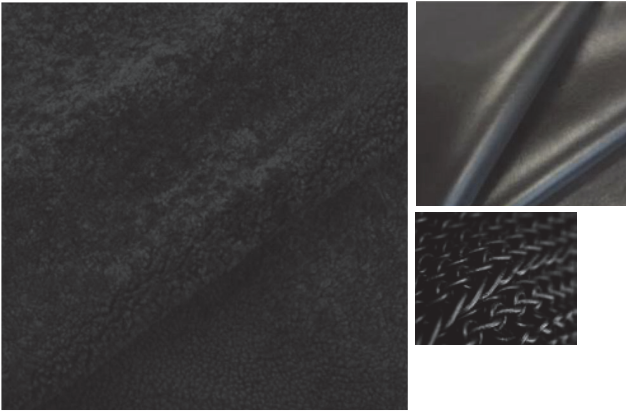


STÆRK

twentieth
sales@twentieth.net
323.904.1200
www.twentieth.net



NAME: THE SIGNATURE CHAISE NO. 1

STYLE NO: STRKCHS01A

COLOR FRAME: 1. 'GOLDEN HORN' (TONES OF BLACKS, BROWNS, TANS OAK) / BLACKENED BRASS INLAY / BLACK LEATHER BINDING

2. 'BLACK HORN' (TONES OF BLACKS, GREYS, SMOKY GREYS OAK) / BLACKENED BRASS INLAY / BLACK LEATHER BINDING

COLOR UPHOLSTERY & HEAD PIECE: 1. 'BLACK' ('BLACK' UPPER SEAT / 'EXTRA DRY MARTINI' LOWER SEAT / 'BLACK' HEAD PIECE)

2. 'MACCHIATO' ('MACCHIATO' UPPER SEAT / 'WHIPPET' LOWER SEAT / 'ERICA' HEAD PIECE)

3. 'MOONLIGHT' ('MOONLIGHT' UPPER SEAT / 'SHALLOW' LOWER SEAT / 'BEACH' HEAD PIECE)

4. 'CREAM' ('CREAM' UPPER SEAT / 'SUPREME' LOWER SEAT / 'WHITE' HEAD PIECE)

MATERIAL FRAME: HAND PAINTED OAK / BLACKENED BRASS INLAY / LEATHER BINDING | OAK FRAME FINISH: F.1. SHEEN F2. MATTE

CUSTOM HARDWARE ON LEATHER BIND TASSEL: PATINATED STEEL FINIAL, ACCENTED WITH A BLACK TAHITIAN PEARL

MATERIAL UPHOLSTERY & HEAD PIECE: A. CURLY SHEARLING UPPER SEAT / LEATHER LOWER SEAT / SIGNATURE HAND-KNITTED LEATHER ARMOUR HEAD PIECE

PRICE UPON REQUEST

DELIVERY: MADE TO ORDER / 14 - 16 WEEKS

MADE IN USA

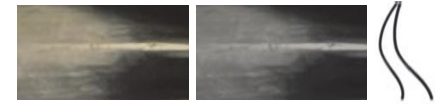
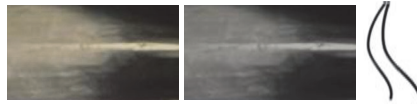
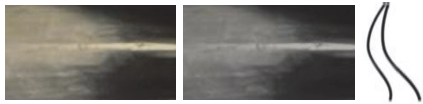
twentieth

sales@twentieth.net

323.904.1200

www.twentieth.net





NAME: THE SIGNATURE CHAISE NO. 1

STYLE NO: STRKCHS01A

COLOR FRAME: 1. 'GOLDEN HORN' (TONES OF BLACKS, BROWNS, TANS OAK) / BLACKENED BRASS INLAY / BLACK LEATHER BINDING

2. 'BLACK HORN' (TONES OF BLACKS, GREYS, SMOKY GREYS OAK) / BLACKENED BRASS INLAY / BLACK LEATHER BINDING

COLOR UPHOLSTERY & HEAD PIECE: 1. 'BLACK' ('BLACK' UPPER SEAT / 'EXTRA DRY MARTINI' LOWER SEAT / 'BLACK' HEAD PIECE)

2. 'MACCHIATO' ('MACCHIATO' UPPER SEAT / 'WHIPPET' LOWER SEAT / 'ERICA' HEAD PIECE)

3. 'MOONLIGHT' ('MOONLIGHT' UPPER SEAT / 'SHALLOW' LOWER SEAT / 'BEACH' HEAD PIECE)

4. 'CREAM' ('CREAM' UPPER SEAT / 'SUPREME' LOWER SEAT / 'WHITE' HEAD PIECE)

MATERIAL FRAME: HAND PAINTED OAK / BLACKENED BRASS INLAY / LEATHER BINDING | OAK FRAME FINISH: F.1. SHEEN F2. MATTE

CUSTOM HARDWARE ON LEATHER BIND TASSEL: PATINATED STEEL FINIAL, ACCENTED WITH A BLACK TAHITIAN PEARL

MATERIAL UPHOLSTERY & HEAD PIECE: A. CURLY SHEARLING UPPER SEAT / LEATHER LOWER SEAT / SIGNATURE HAND-KNITTED LEATHER ARMOUR HEAD PIECE

PRICE UPON REQUEST

DELIVERY: MADE TO ORDER / 14 - 16 WEEKS

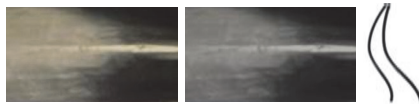
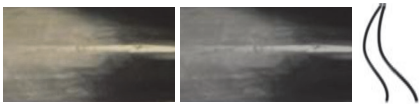
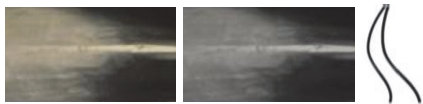
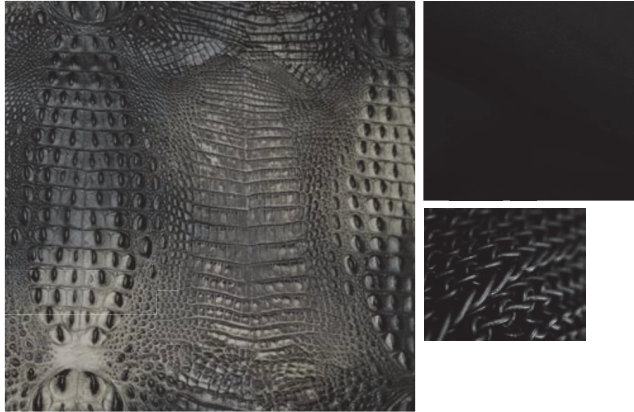
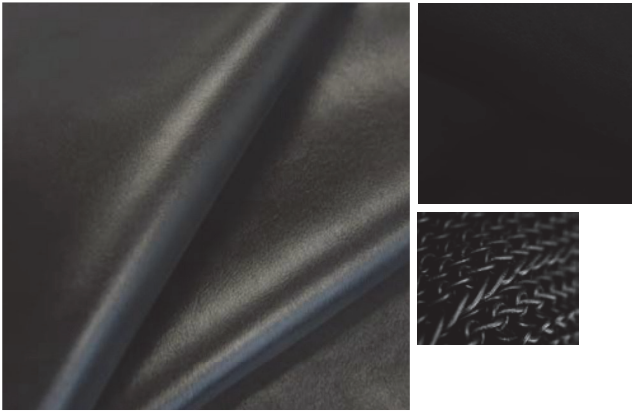
MADE IN USA

twentieth

sales@twentieth.net

323.904.1200

www.twentieth.net



NAME: THE SIGNATURE CHAISE NO. 1

STYLE NO: STRKCHS01B

COLOR FRAME: 1. 'GOLDEN HORN' (TONES OF BLACKS, BROWNS, TANS OAK) / BLACKENED BRASS INLAY / BLACK LEATHER BINDING
 2. 'BLACK HORN' (TONES OF BLACKS, GREYS, SMOKY GREYS OAK) / BLACKENED BRASS INLAY / BLACK LEATHER BINDING

COLOR UPHOLSTERY & HEAD PIECE: 1. 'BLACK' ('EXTRA DRY MARTINI' UPPER SEAT / 'THE BLACKEST' LOWER SEAT / 'BLACK' HEAD PIECE
 2. 'BLACK SNAKE' ('SNAKE' UPPER SEAT / 'THE BLACKEST' LOWER SEAT / 'BLACK' HEAD PIECE
 3. 'CREAM' ('SUPREME' UPPER SEAT / 'GLITZ' LOWER SEAT / 'WHITE' HEAD PIECE

MATERIAL FRAME: HAND PAINTED OAK / BLACKENED BRASS INLAY / LEATHER BINDING | OAK FRAME FINISH: F.1. SHEEN F2. MATTE

CUSTOM HARDWARE ON LEATHER BIND TASSEL: PATINATED STEEL FINIAL, ACCENTED WITH A BLACK TAHITIAN PEARL

MATERIAL UPHOLSTERY & HEAD PIECE: B. LEATHER UPPER SEAT / SUEDE LOWER SEAT / SIGNATURE HAND-KNITTED LEATHER ARMOUR HEAD PIECE

PRICE UPON REQUEST

DELIVERY: MADE TO ORDER / 14 - 16 WEEKS

MADE IN USA

twentieth

sales@twentieth.net
 323.904.1200
 www.twentieth.net