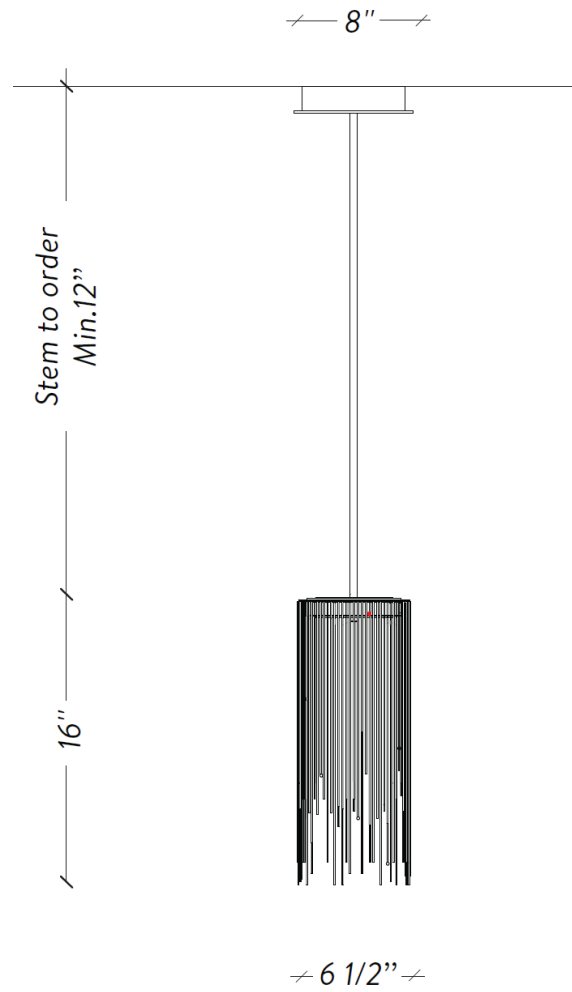




LAROSE
GUYON



OTÉRO-XS-01



LAROSE
GUYON

+1 450.583.5335
INFO@LAROSEGUYON.COM
621 MARIE-VICTORIN
VERCHÈRES, QUÉBEC
CANADA, JOL 2R0



HANDMADE
IN CANADA

SPÉCIFICATIONS

DIMENSIONS

6 1/2" x 6 1/2" x 16" H / 6 lbs

STEM TO ORDER / TIGE À COMMANDER

12", 18", 24", 30" or 36"

Up-charge applies for additional lengths
Frais additionnels pour les longueurs supplémentaires

SOURCE

Dimmable integrated LED / *DEL intégré dimmable*

2700K (Dim-to-Warm 2200K to 2700K)

360 Lumens - 50 000h

Input: 120V

Tri-Mode Dimming: Triac, ELV & 0-10V (upon Request / *Sur demande*)

8,4W constant current driver / *Transformateur à courant constant 8,4 W*

CERTIFICATION

UL listed for Canada and USA

Certifié UL pour le Canada et E-U

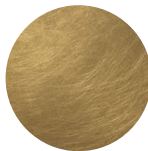


COMPATIBLE DIMMER LIST/

LISTE DE GRADATEUR COMPATIBLE

Lutron	DVCL-153P *Recommended
Leviton	IPI06-1LZ
Leviton	6631-2
Lutron	S-603PG
Lutron	DV-600P
Lutron	TGCL-153P
Lutron	S-600P
Leviton	VPE06

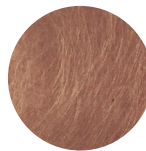
FINISHE TO ORDER / FINIS À COMMANDER



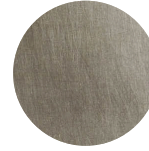
Aged Brass
Laiton Antique



Aged Bronze
Bronze Antique



Aged Copper
Cuivre Antique



Tarnished Nickel
Nickel Terni



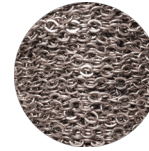
Aged Brass
Laiton Antique



Aged Bronze
Bronze Antique



Aged Copper
Cuivre Antique



Satin Nickel
Nickel Satiné

LAROSE
GUYON


HANDMADE
IN CANADA

twentieth
www.twentieth.net
sales@twentieth.net
323.904.1200