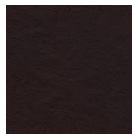


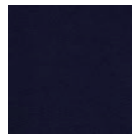
LEATHER OPTIONS | COM AVAILABLE



Black



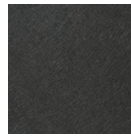
Mocca



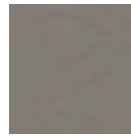
Navy



Straw



Anthracite



Elephant



Oyster



Latte



White

METAL | DUCO



Black
High Gloss



Black
Ferrograin



Saddle Wood
Ferrograin



Light Grey
High Gloss



Charcoal
Satin



Light Grey
Ferrograin



White
Ferrograin



Satin
White

METAL



Mild Steel

DESCRIPTION

Upholstered | Powdercoated Mild Steel Swivel Base

DIMENSIONS

780W x 870D x 690H mm | SEAT HEIGHT: 380 mm | 30.7W x 34.2D x 27.1H in | SEAT HEIGHT: 15 in

COM/COL

Fabric: 4m | 4.3yd

Leather: 6.9m² | 74.2sq ft

DISCLAIMERS:

TIMBER - Different textures, grains, colouration and densities are all natural characteristics of timbers. We find these variances an inherent and valuable part of the natural beauty of wood, no two pieces are the same making each OKHA design a unique, characterful piece and each product will be different from the next. Timber movement will also occur as this is a natural product.

METALS - All raw metals; brass, copper, mild steel in their respective finishes are unsealed. Metals in a raw, natural and unsealed state will oxidise and change in colour and tone. This is a completely natural process, therefore all our metal finishes will need to be maintained with an appropriate wax/crème, the application of which will build up a natural sealant over time. **Ferrograin**: a lightly textured matte paint finish.