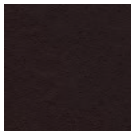


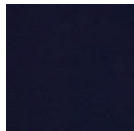
### LEATHER OPTIONS | COM AVAILABLE



Black



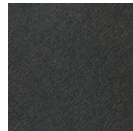
Mocca



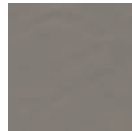
Navy



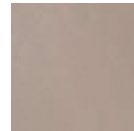
Straw



Anthracite



Elephant



Oyster

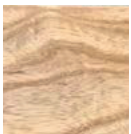


Latte

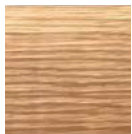


White

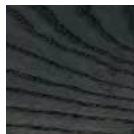
### WOOD OPTIONS



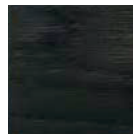
Natural Ash



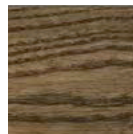
Natural Oak



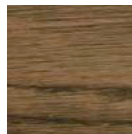
Carbon Ash



Carbon Oak



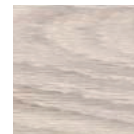
Dark Java Ash



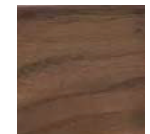
Dark Java Oak



Chalk Ash



Chalk Oak



Walnut

### DESCRIPTION

Upholstered | Ash / Oak / Walnut Frame Options

### DIMENSIONS

500W x 465D x 740H mm | SEAT HEIGHT: 740 mm | 16.9W x 18.3D x 29.1H in | SEAT HEIGHT: 29.1 in

### COM/COL

Plain Fabric: 1m | 0.55yd

Leather: 1.6m<sup>2</sup> | 8.6sq ft

### DISCLAIMERS:

**METALS** - All raw metals; brass, copper, mild steel in their respective finishes are unsealed. Metals in a raw, natural and unsealed state will oxidise and change in colour and tone. This is a completely natural process, therefore all our metal finishes will need to be maintained with an appropriate wax/crème, the application of which will build up a natural sealant over time. **Ferrogain**: a lightly textured matte paint finish.