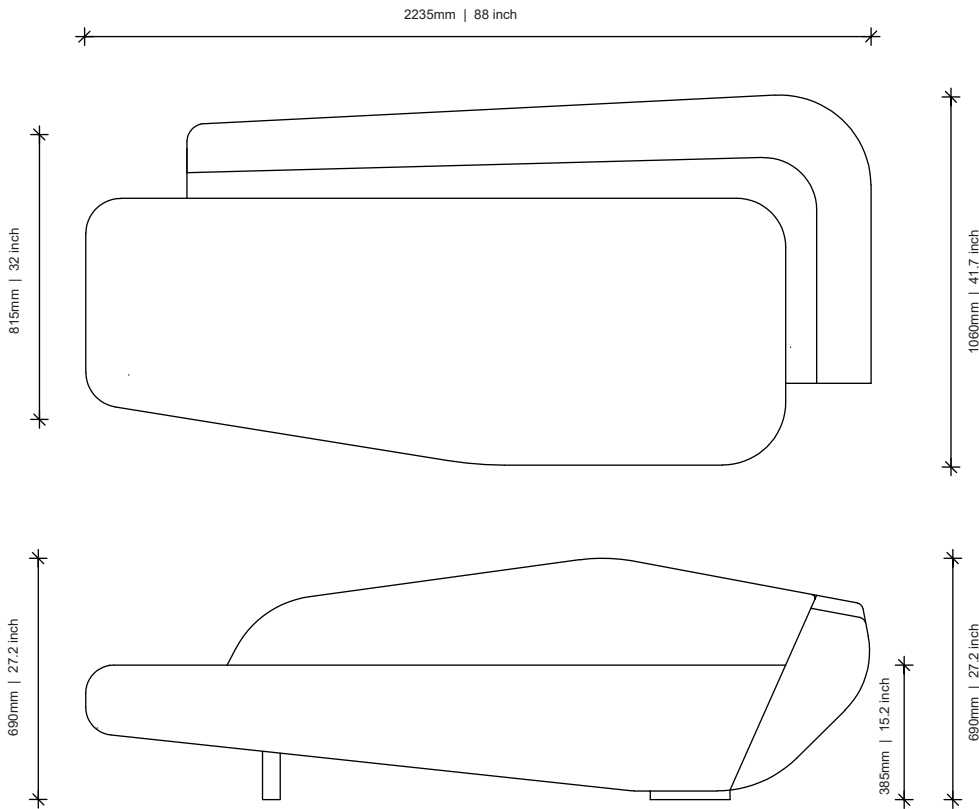


DESIGNED BY OKHA



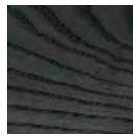
WOOD OPTIONS



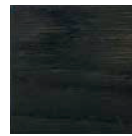
Natural Ash



Natural Oak



Carbon Ash



Carbon Oak



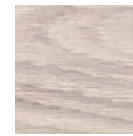
Dark Java Ash



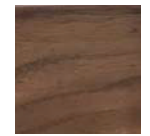
Dark Java Oak



Chalk Ash



Chalk Oak



Walnut

OTHER



Perspex Clear

DESCRIPTION

Upholstered | Perspex / Ash / Oak / Walnut Base Options

DIMENSIONS

2235W x 1060D x 690H mm | SEAT HEIGHT 385 mm | 88W x 41.7D x 27.2H in | SEAT HEIGHT 15.1 in

COM/COL

Fabric: 9.5m | 10.3yd

Leather: 19.5m² | 209.8sq ft

DISCLAIMERS:

TIMBER - Different textures, grains, colouration and densities are all natural characteristics of timbers. We find these variances an inherent and valuable part of the natural beauty of wood, no two pieces are the same making each OKHA design a unique, characterful piece and each product will be different from the next. Timber movement will also occur as this is a natural product.

METALS - All raw metals; brass, copper, mild steel in their respective finishes are unsealed. Metals in a raw, natural and unsealed state will oxidise and change in colour and tone. This is a completely natural process, therefore all our metal finishes will need to be maintained with an appropriate wax/crème, the application of which will build up a natural sealant over time. **Ferrogain**: a lightly textured matte paint finish.