

HOUSE UPHOLSTREY GUIDE / 2021

# ROSS GARDAM

IN PARTNERSHIP WITH KVADRAT  
MAHARAM & PELLE LEATHERS



---

**ROSS GARDAM HOUSE FABRICS**

Our house upholstery collection is a curated range of textiles and leathers carefully selected for use with our upholstered products. The collection offers a range of different textures and colours, in well crafted and versatile designs.

In partnership with Kvadrat Maharam & Pelle Leathers, these textiles are environmentally accredited and where possible use recycled content and natural, renewable resources.

---

**COLLECTIONS**

The collections have been categorised into pricing tiers ranging from lower priced options in Category A to higher priced options in Category D. Below are the fabric and leather collections available in each of the categories.

**CATEGORY A**

MAHARAM - MODE 6  
MAHARAM - MERIT 8  
MAHARAM - MELD 10

**CATEGORY B**

KVADRAT - SAVANNA 12  
KVADRAT - FOSS 14  
KVADRAT - TWILL WEAVE 16  
KVADRAT - MELANGE NAP 18

**CATEGORY C**

KVADRAT - SUNNIVA 3 20  
KVADRAT - TONICA 2 22  
PELLE - PANORAMA 24

**CATEGORY D**

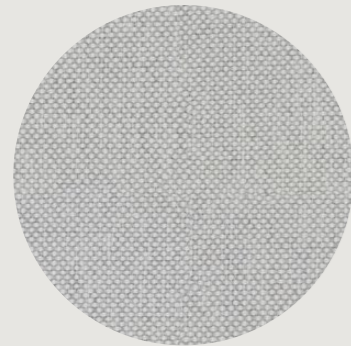
MAHARAM - HEARTH 26  
KVADRAT - VIDAR 4 28  
KVADRAT - CODA 2 30  
KVADRAT - GENTLE 2 32  
KVADRAT - SISU 34  
PELLE - TOLEDO 36

twentieth

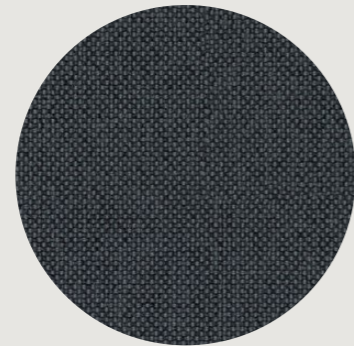
www.twentieth.net  
sales@twentieth.net  
323.904.1200



MAHARAM MODE - FABRIC CATEGORY A



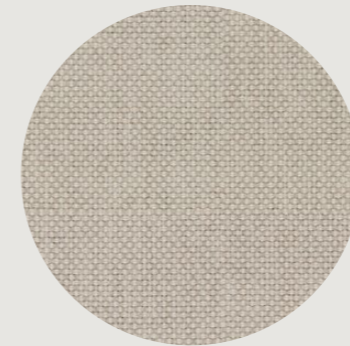
001 - STROLL



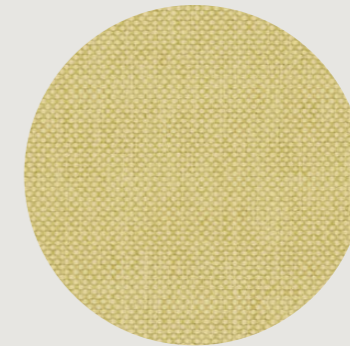
004 - MACHINE



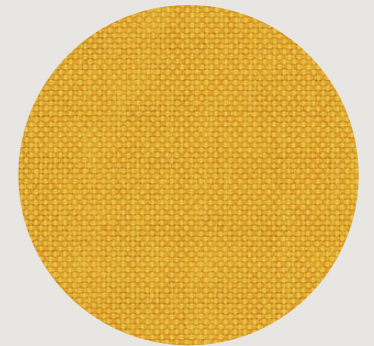
007 - HOLLOW



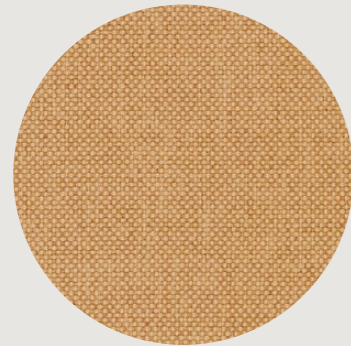
010 - BILLYGOAT



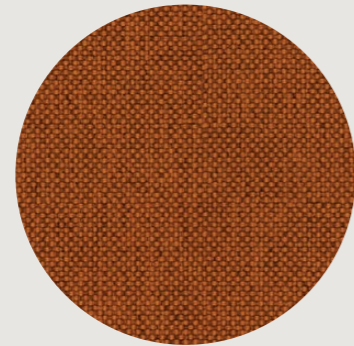
012 - LEMON



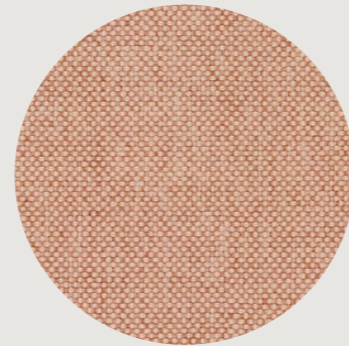
015 - GOLDENROD



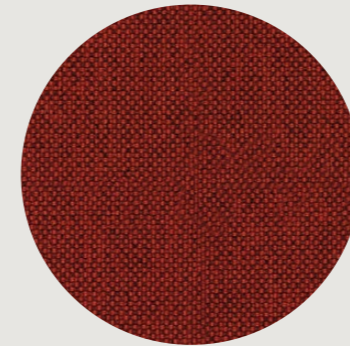
017 - LIONESS



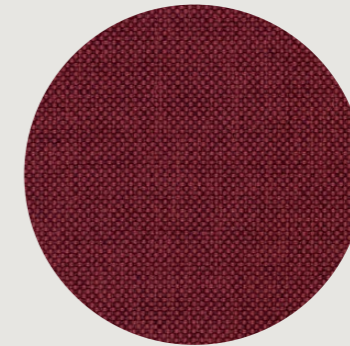
019 - ORIOLE



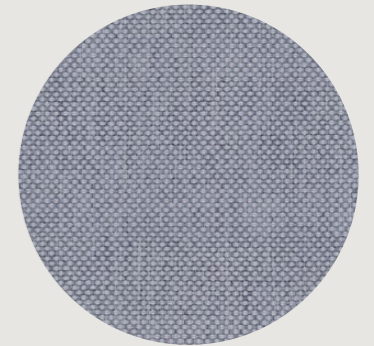
021 - BLUSH



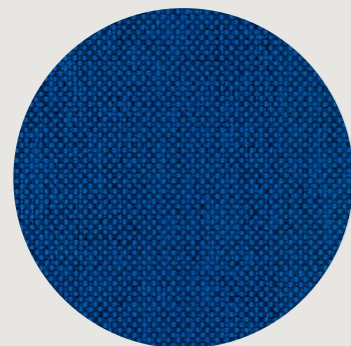
023 - ALDER



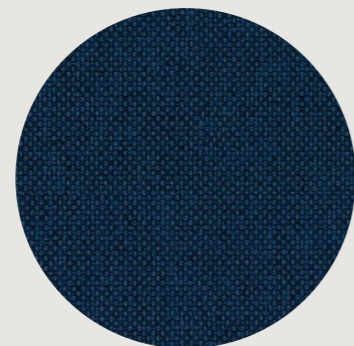
025 - BARBERRY



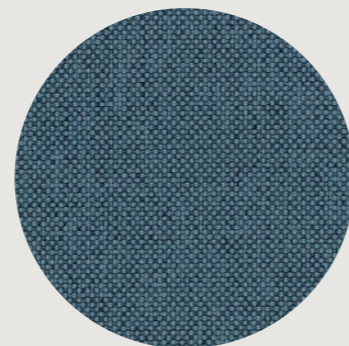
027 - VALLEY



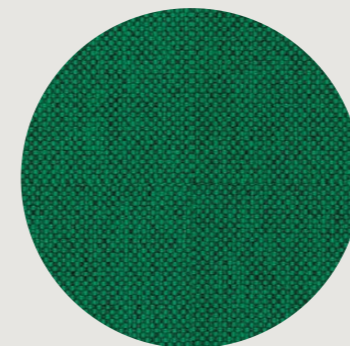
032 - ANGLEFISH



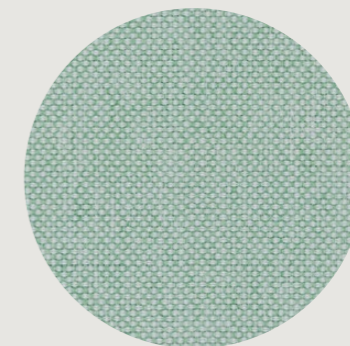
033 - DENIM



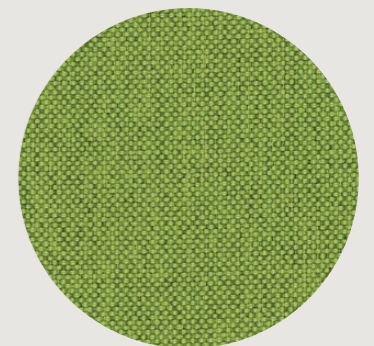
035 - JETTY



038 - CELTIC



039 - ECALYPTUS



041 - SASSAFRAS

MATERIAL DETAILS

CONTENT : 80% POST-CONSUMER RECYCLED POLYESTER, 20 % POLYESTER  
WIDTH : 137CM (54")  
WEIGHT : 700 GR/LM (22,8 OZ/LY)  
COUNTRY OF ORIGIN : USA

DURABILITY : 100,000 DOUBLE RUBS WYZENBEEK  
LIGHTFASTNESS : 40+ HOURS  
CLEANING CATEGORY : POLYESTERS + BLENDS

ENVIRONMENTAL

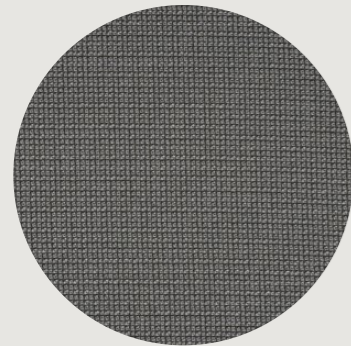
GREENGUARD AND GREENGUARD GOLD CERTIFIED  
GRS CERTIFIED  
REACH COMPLIANT  
CONTAINS RECYCLED CONTENT  
FR FREE

WARRANTY

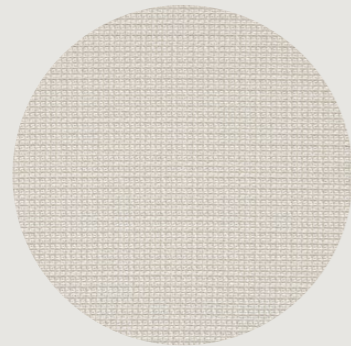
3 YEARS: INDOOR SEATING

THE COLOURS ABOVE ARE A SELECTION OF THE MODE RANGE. FOR THE FULL RANGE AND MORE INFORMATION PLEASE VISIT [WWW.MAHARAM.COM](http://WWW.MAHARAM.COM)

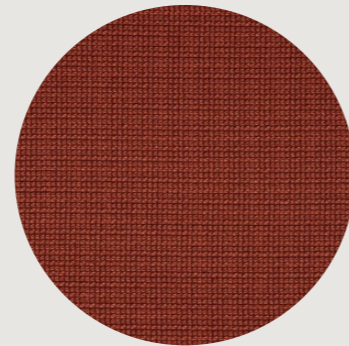
**MAHARAM MERIT - FABRIC CATEGORY A**



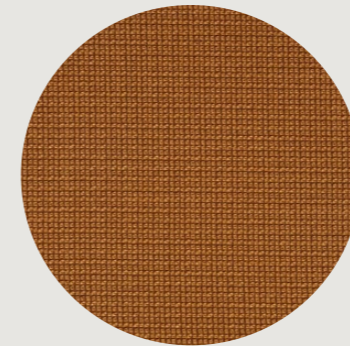
001 - PHANTOM



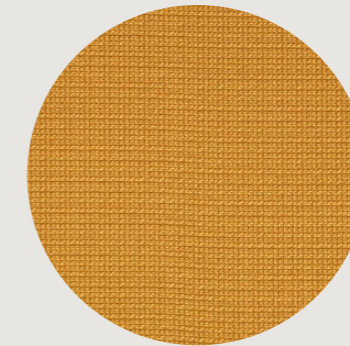
003 - FLEECE



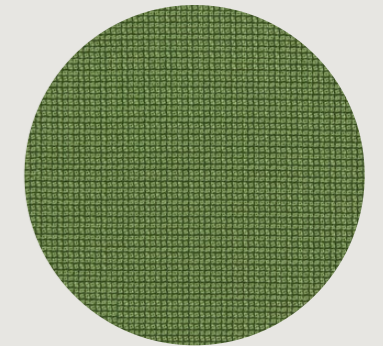
011 - BRICK



017 - CAMEL



018 - POLLEN



020 - ALLIGATOR



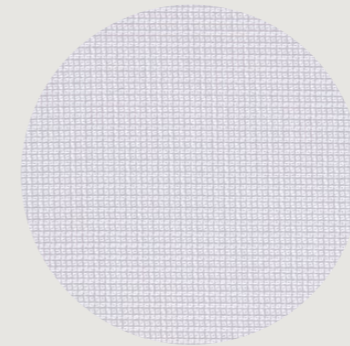
022 - BONSAI



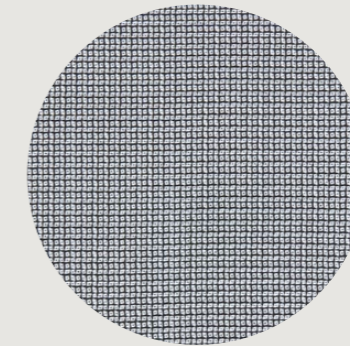
023 - TAR



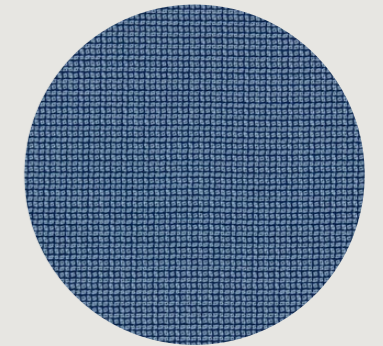
025 - TWILIGHT



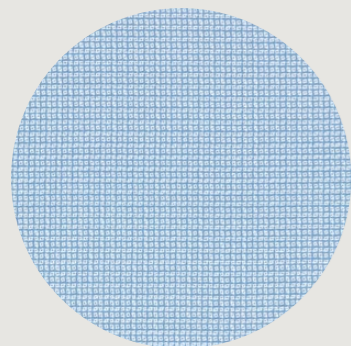
029 - SKATE



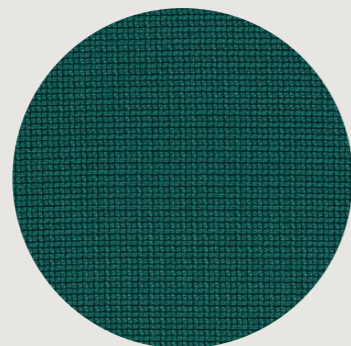
031 - FILM



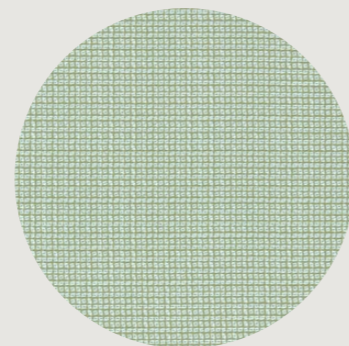
033 - DOWNPOUR



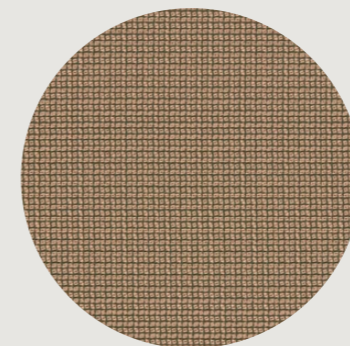
034 - MIDDAY



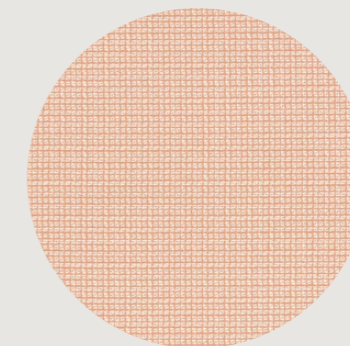
036 - HEDGEROW



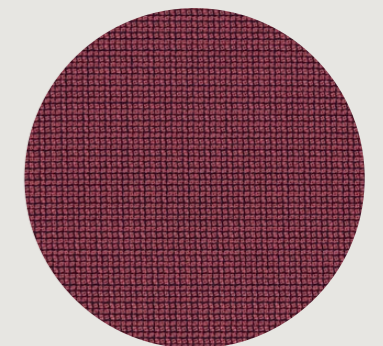
037 - SNORKEL



041 - AZTEC



042 - FRUIT



044 - KILN

**MATERIAL DETAILS**

CONTENT : 76% POST-CONSUMER RECYCLED POLYESTER, 24% POLYESTER  
 WIDTH : 137CM (54")  
 WEIGHT : 500 GR/LM (17.1 OZ/LY)  
 COUNTRY OF ORIGIN : USA

DURABILITY : 100,000 DOUBLE RUBS WYZENBEEK  
 LIGHTFASTNESS : 40+ HOURS  
 CLEANING CATEGORY : POLYESTERS + BLENDS

**ENVIRONMENTAL**

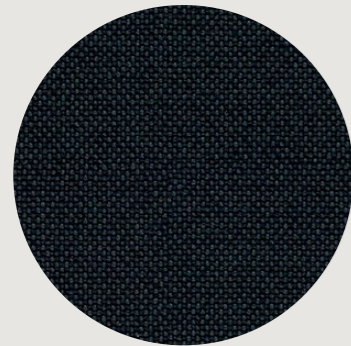
GREENGUARD AND GREENGUARD GOLD CERTIFIED  
 GRS CERTIFIED  
 REACH COMPLIANT  
 CONTAINS RECYCLED CONTENT  
 FR FREE

**WARRANTY**

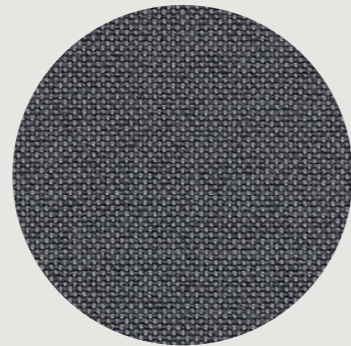
3 YEARS: INDOOR SEATING

THE COLOURS ABOVE ARE A SELECTION OF THE MERIT RANGE. FOR THE FULL RANGE AND MORE INFORMATION PLEASE VISIT [WWW.MAHARAM.COM](http://WWW.MAHARAM.COM)

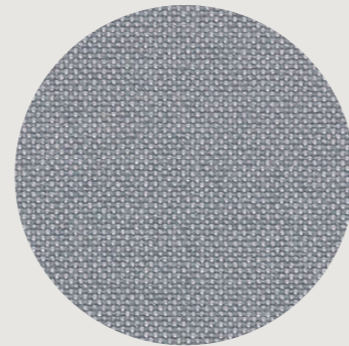
MAHARAM MELD - FABRIC CATEGORY A



001 - VAST



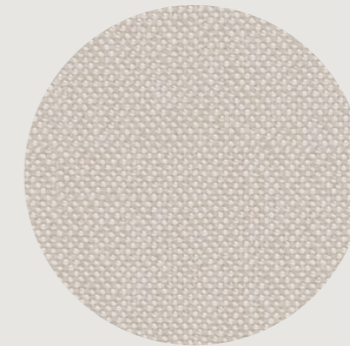
004 - KNIGHT



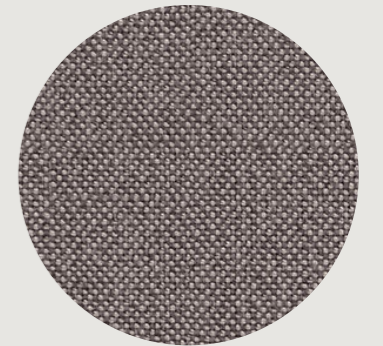
007 - PIPE



011 - STARK



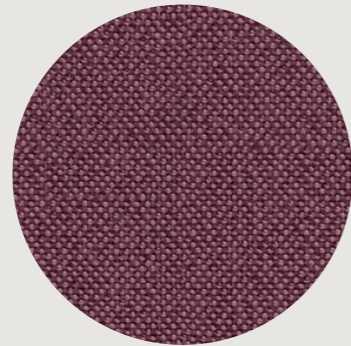
012 - SEASHELL



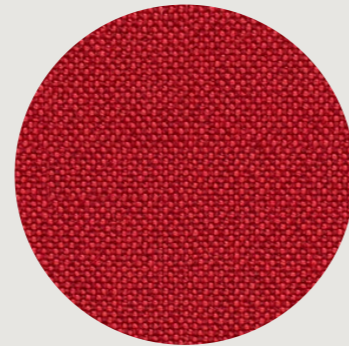
014 - CRATER



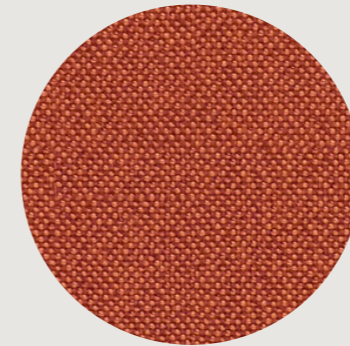
016 - MULBERRY



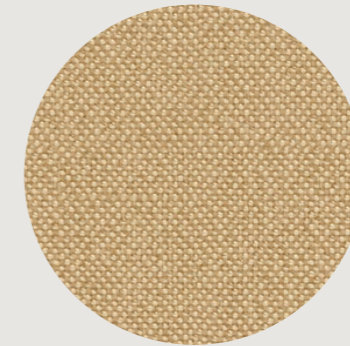
018 - AMETHYST



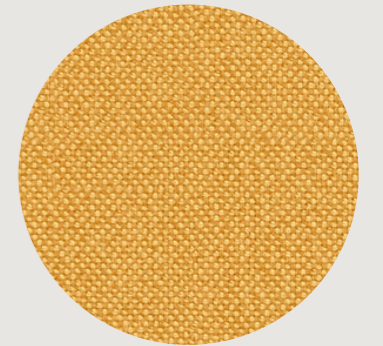
020 - MAGMA



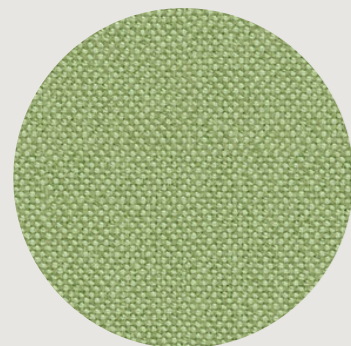
024 - FOX



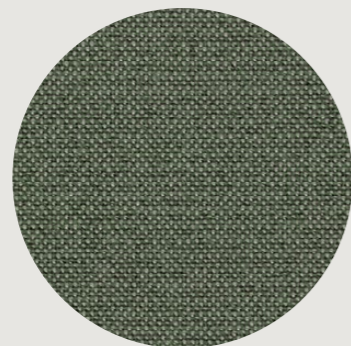
027 - BLONDE



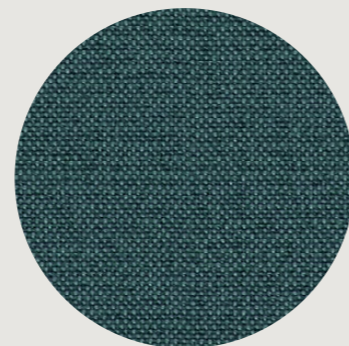
028 - MIMOSA



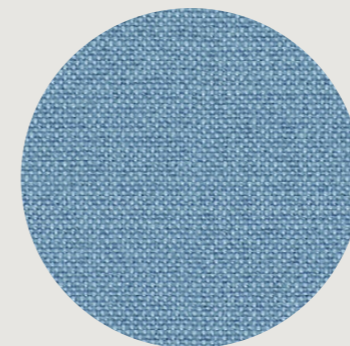
030 - HONEYDEW



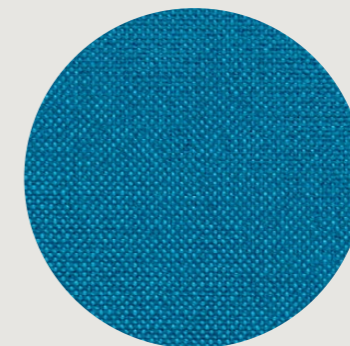
032 - VINE



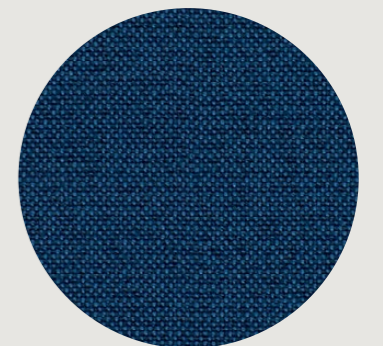
034 - KALE



036 - NORDIC



037 - REEF



039 - ISLE

MATERIAL DETAILS

CONTENT : 68% POST-CONSUMER RECYCLED POLYESTER, 32% POLYESTER  
WIDTH : 137CM (54")  
WEIGHT: 500 GR/LM (16.5 OZ/LY)  
COUNTRY OF ORIGIN : USA

DURABILITY : 100,000 DOUBLE RUBS WYZENBEEK  
LIGHTFASTNESS : 40+ HOURS  
CLEANING CATEGORY : POLYESTERS + BLENDS

ENVIRONMENTAL

GREENGUARD AND GREENGUARD GOLD CERTIFIED  
GRS CERTIFIED  
REACH COMPLIANT  
CONTAINS RECYCLED CONTENT  
FR FREE

WARRANTY

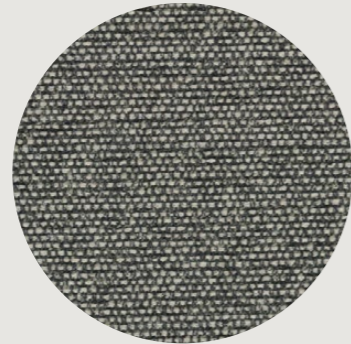
3 YEARS: INDOOR SEATING

THE COLOURS ABOVE ARE A SELECTION OF THE MELD RANGE. FOR THE FULL RANGE AND MORE INFORMATION PLEASE VISIT [WWW.MAHARAM.COM](http://WWW.MAHARAM.COM)

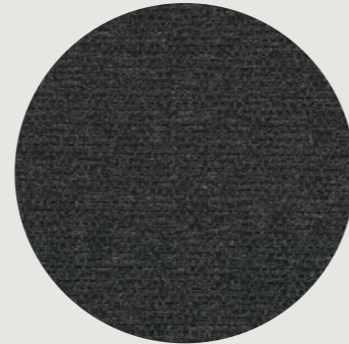
**KVADRAT SAVANNA - FABRIC CATEGORY B**



0122



0152



0192



0202



0222



0242



0262



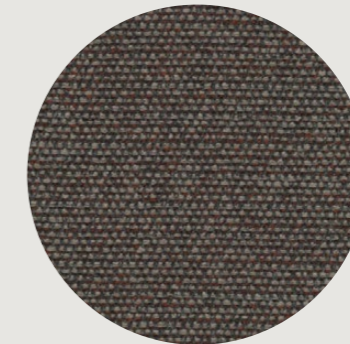
0292



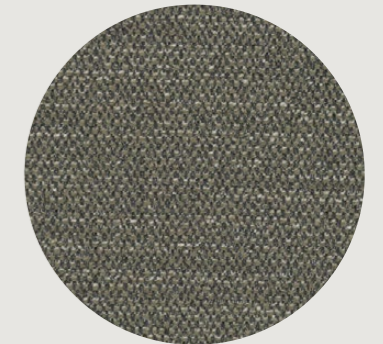
0442



0662



0672



0952

twentieth  
[www.twentieth.net](http://www.twentieth.net)  
[sales@twentieth.net](mailto:sales@twentieth.net)  
 323.904.1200

**MATERIAL DETAILS**

CONTENT : 34% POLYESTER 31% NEW WOOL 26% POLYACRYLIC 4% COTTON  
 3% NYLON 2% LINEN  
 WIDTH : 140 CM (55")  
 WEIGHT: 681 G/LIN. M (21.97 OZ/LY)

COUNTRY OF ORIGIN : NORWAY  
 DURABILITY : 45,000 MARTINDALE  
 LIGHTFASTNESS : 6-7  
 CLEANING CATEGORY : POLYESTERS + WOOL

**ENVIRONMENTAL**

GREENGUARD GOLD CERTIFIED  
 ENVIRONMENTAL PRODUCT DECLARATIONS (EPDS)  
 HEALTH PRODUCT DECLARATIONS (HPDS)

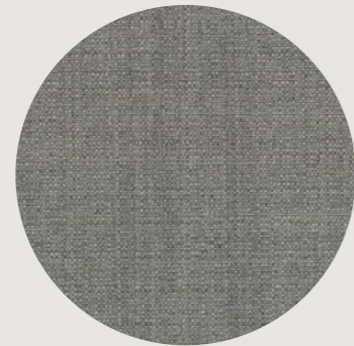
**WARRANTY**

10 YEARS  
 FOR MORE INFORMATION PLEASE VISIT  
[WWW.KVADRAT.DK](http://WWW.KVADRAT.DK)

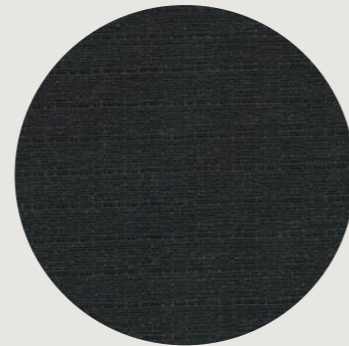
**KVADRAT FOSS - FABRIC CATEGORY B**



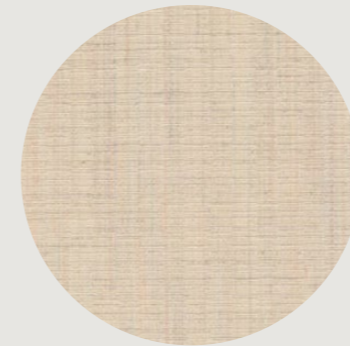
0102



0142



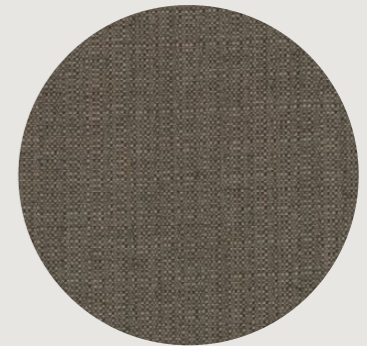
0192



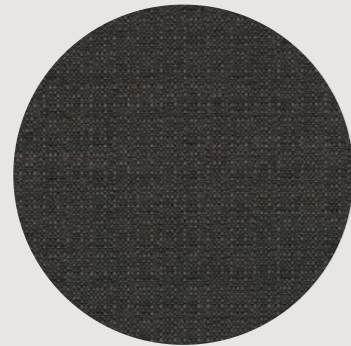
0202



0232



0272



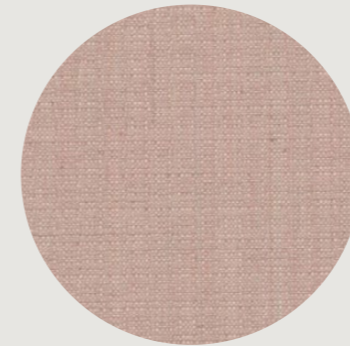
0382



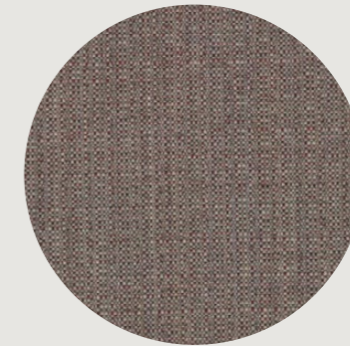
0412



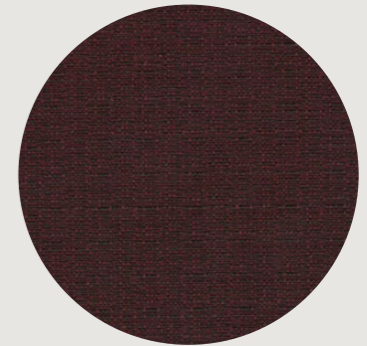
0472



0612



0632



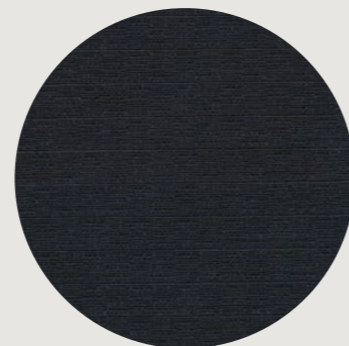
0692



0722



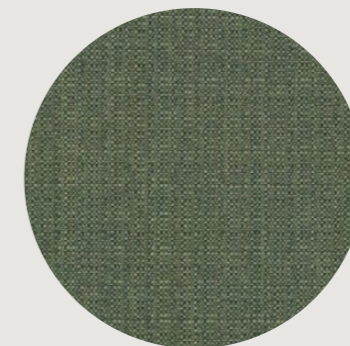
0752



0792



0902



0932



0952

**MATERIAL DETAILS**

CONTENT : 76% NEW WOOL WORSTED 11% VISCOSE 8% NYLON 5% LINEN  
 WIDTH : 145 CM (57")  
 WEIGHT : 500 G/LIN. M (16.13 OZ/LY)  
 COUNTRY OF ORIGIN : NORWAY

DURABILITY : 100,000 MARTINDALE  
 LIGHTFASTNESS : 6-7  
 CLEANING CATEGORY : WOOL

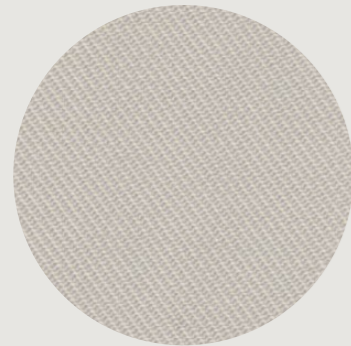
**ENVIRONMENTAL**

EU ECOLABEL  
 GREENGUARD GOLD CERTIFIED  
 ENVIRONMENTAL PRODUCT DECLARATIONS (EPDS)  
 HEALTH PRODUCT DECLARATIONS (HPDS)

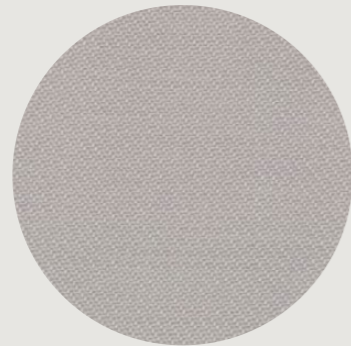
**WARRANTY**

10 YEARS  
 THE COLOURS ABOVE ARE A SELECTION OF THE FOSS RANGE. FOR THE FULL RANGE AND MORE INFORMATION PLEASE VISIT [WWW.KVADRAT.DK](http://WWW.KVADRAT.DK)

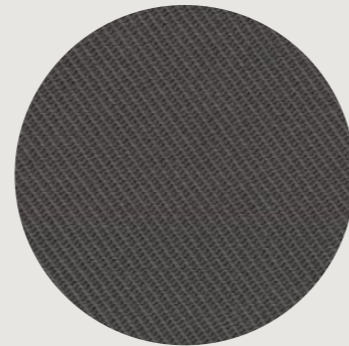
**KVADRAT TWILL WEAVE - FABRIC CATEGORY B**



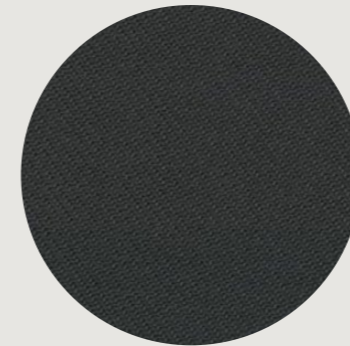
0110



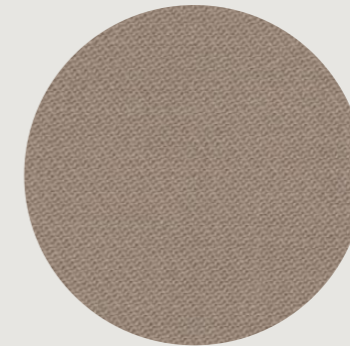
0120



0160



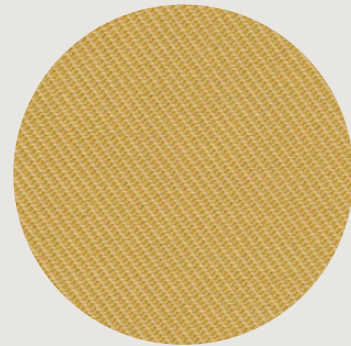
0190



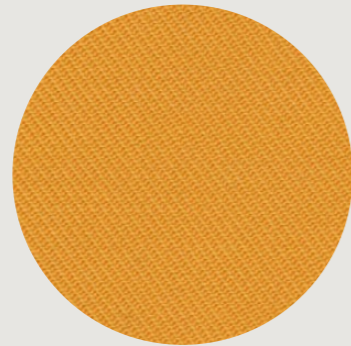
0230



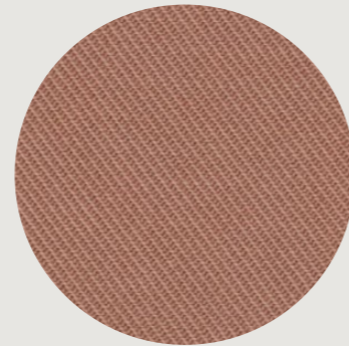
0280



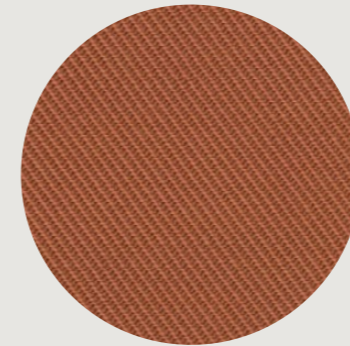
0430



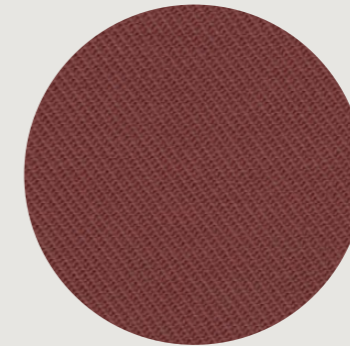
0440



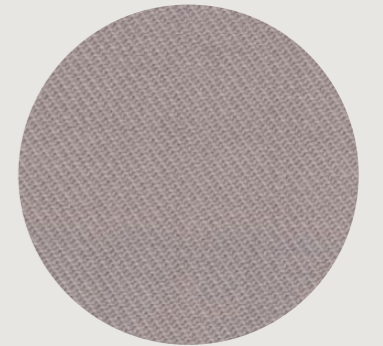
0530



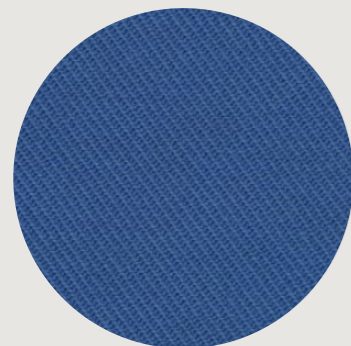
0550



0570



0620



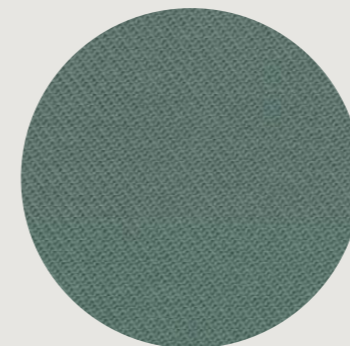
0750



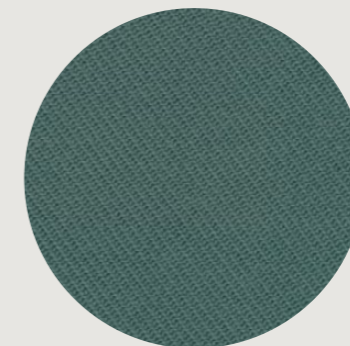
0780



0790



0940



0960



0990

**MATERIAL DETAILS**

CONTENT : 90% NEW WOOL WORSTED 10% NYLON  
 WIDTH : 140 CM ( 55")  
 WEIGHT: 960 G/LIN. M (30.96 OZ/LY)  
 COUNTRY OF ORIGIN : UNITED KINGDOM

DURABILITY : 60,000 MARTINDALE  
 LIGHTFASTNESS : 5-7 (ISO 1-8)  
 CLEANING CATEGORY : WOOL

**ENVIRONMENTAL**

EU ECOLABEL  
 GREENGUARD GOLD CERTIFIED  
 HEALTH PRODUCT DECLARATIONS (HPDS)

**WARRANTY**

10 YEARS

THE COLOURS ABOVE ARE A SELECTION OF THE TWILL WEAVE RANGE. FOR THE FULL RANGE AND MORE INFORMATION PLEASE VISIT [WWW.KVADRAT.DK](http://WWW.KVADRAT.DK)

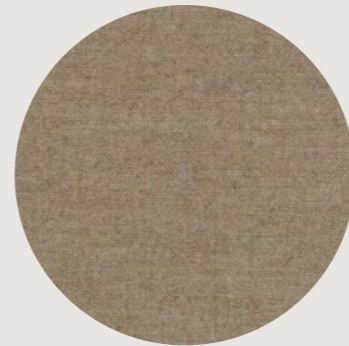
**KVADRAT MELANGE NAP - FABRIC CATEGORY B**



0111



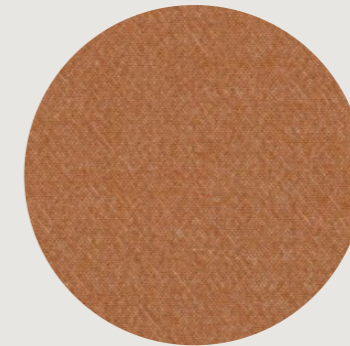
0191



0211



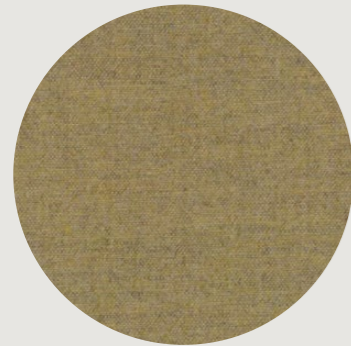
0271



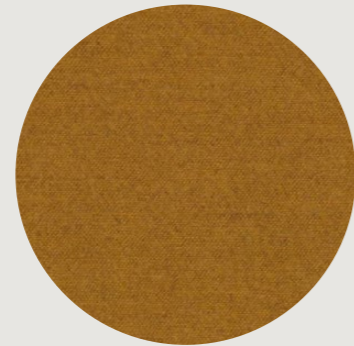
0321



0351



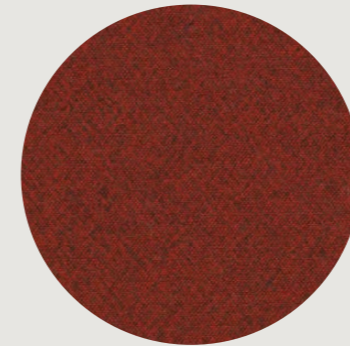
0411



0461



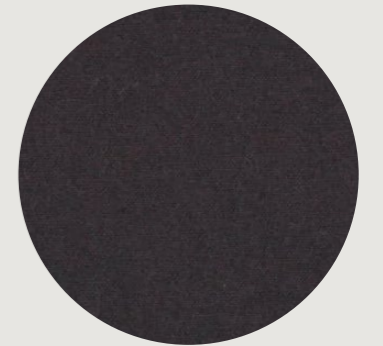
0491



0551



0651



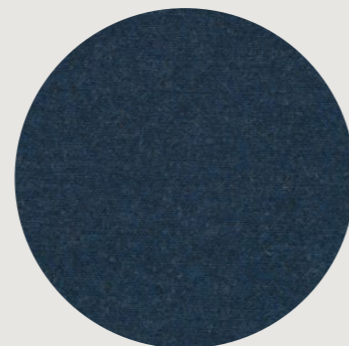
0691



0711



0751



0871



0991



0951



0991

**MATERIAL DETAILS**

CONTENT : 97% NEW WOOL WORSTED 3% NYLON  
 WIDTH : 140 CM (55")  
 WEIGHT: 440 G/LIN. M (14.19 OZ/LY)  
 COUNTRY OF ORIGIN : UNITED KINGDOM

DURABILITY : 60,000 MARTINDALE  
 LIGHTFASTNESS : 6 (ISO 1-8)  
 CLEANING CATEGORY : WOOL

**ENVIRONMENTAL**

GREENGUARD GOLD CERTIFIED  
 ENVIRONMENTAL PRODUCT DECLARATIONS (EPDS)  
 HEALTH PRODUCT DECLARATIONS (HPDS)

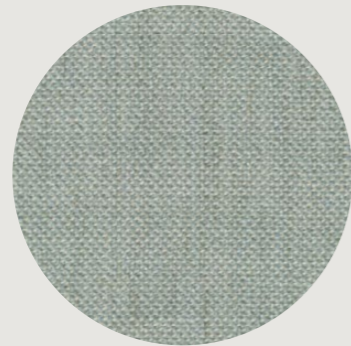
**WARRANTY**

10 YEARS  
 THE COLOURS ABOVE ARE A SELECTION OF THE MELANGE NAP RANGE. FOR THE FULL RANGE AND MORE INFORMATION PLEASE VISIT [WWW.KVADRAT.DK](http://WWW.KVADRAT.DK)

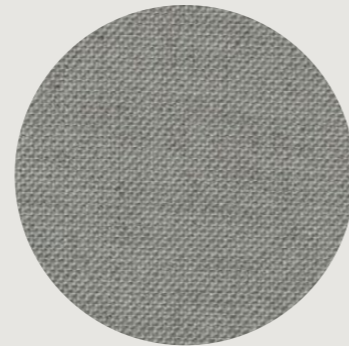
KVADRAT SUNNIVA 3 - FABRIC CATEGORY C



0113



0132



0153



0173



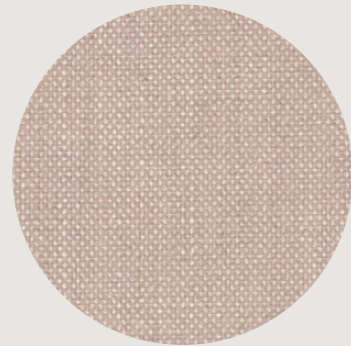
0183



0192



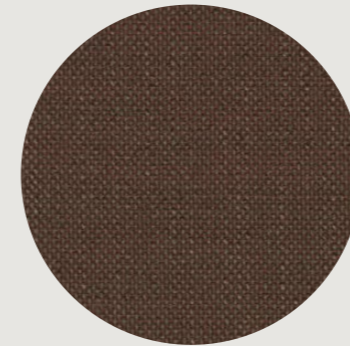
0233



0236



0253



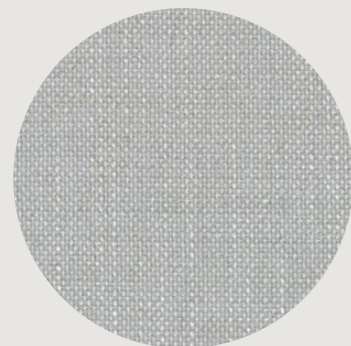
0363



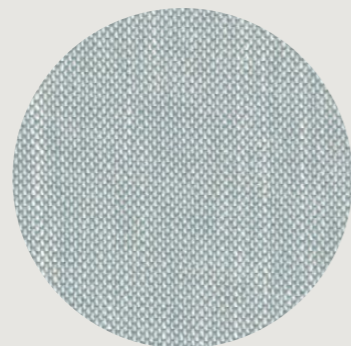
0383



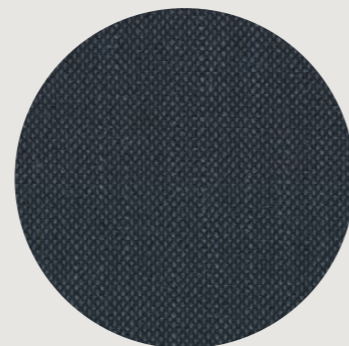
0662



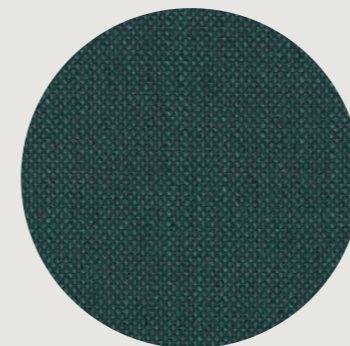
0713



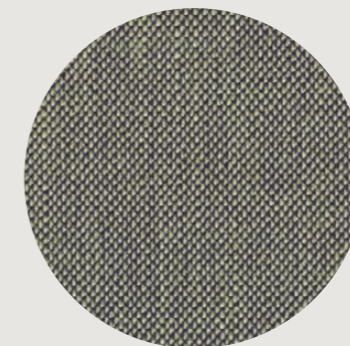
0723



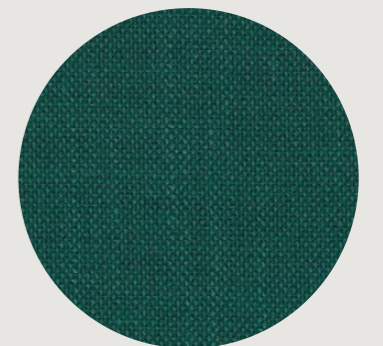
0783



0863



0952



0953

MATERIAL DETAILS

CONTENT : 58% NEW WOOL 25% VISCOSE 8% LINEN 5% NYLON 4%  
POLYESTER  
WIDTH : 140 CM (55")  
WEIGHT: 593 G/LIN. M (19.13 OZ/LY)

COUNTRY OF ORIGIN : NORWAY  
DURABILITY : 50,000 MARTINDALE  
LIGHTFASTNESS : 5  
CLEANING CATEGORY : WOOL

WARRANTY

10 YEARS

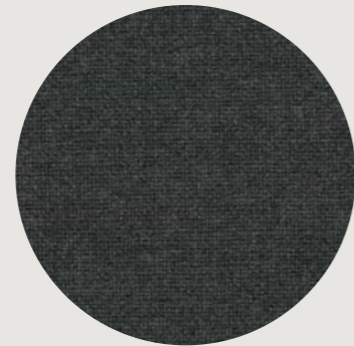
THE COLOURS ABOVE ARE A SELECTION OF THE SUNNIVA 3 RANGE.  
FOR THE FULL RANGE AND MORE INFORMATION PLEASE VISIT  
WWW.KVADRAT.DK

twentieth  
www.twentieth.net  
sales@twentieth.net  
323.904.1200

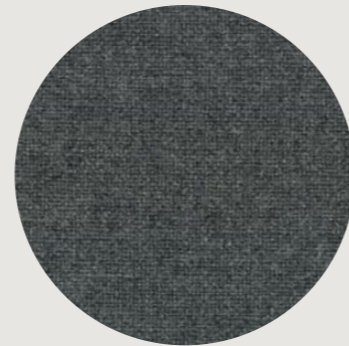
**KVADRAT TONICA 2 - FABRIC CATEGORY C**



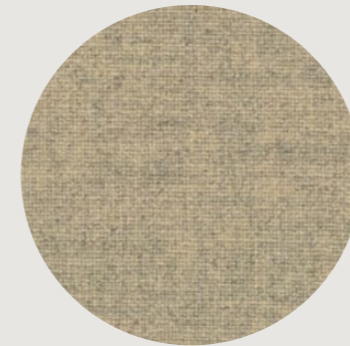
0111



0132



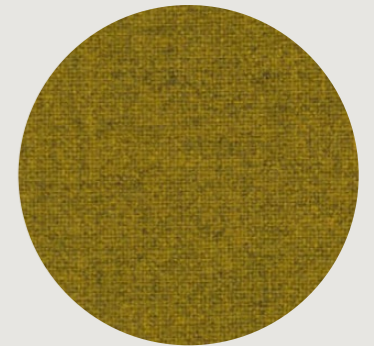
0182



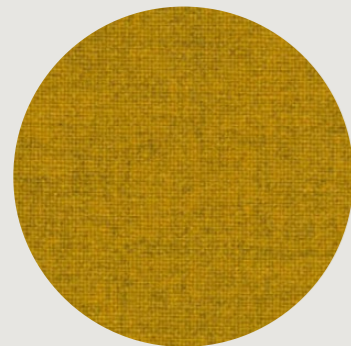
0223



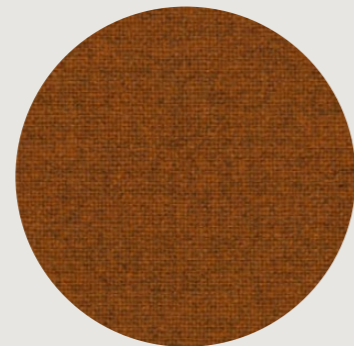
0353



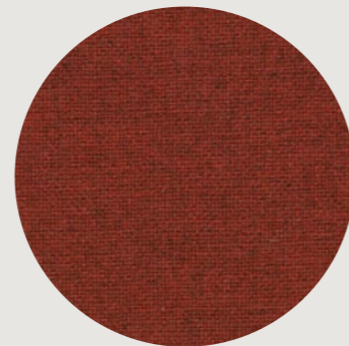
0411



0443



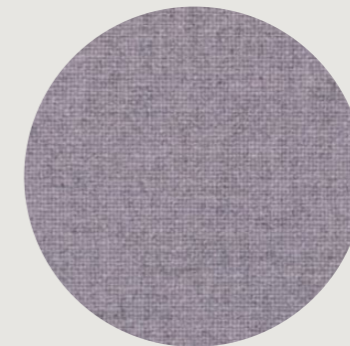
0511



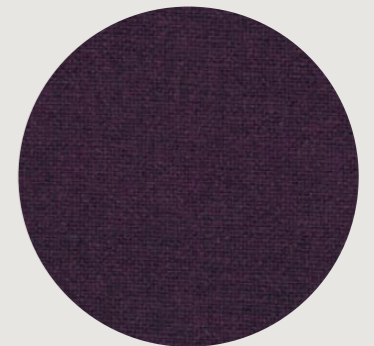
0531



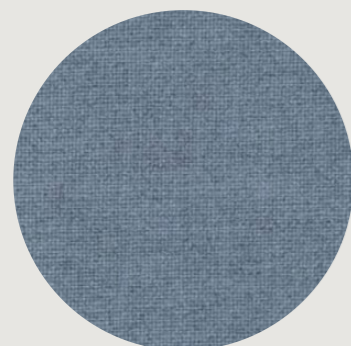
0612



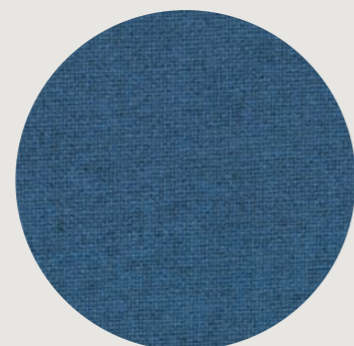
0623



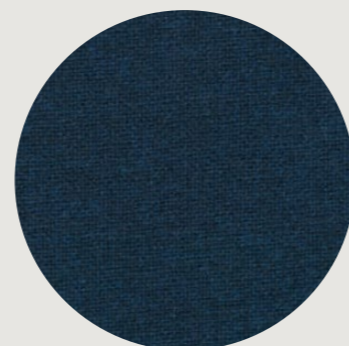
0672



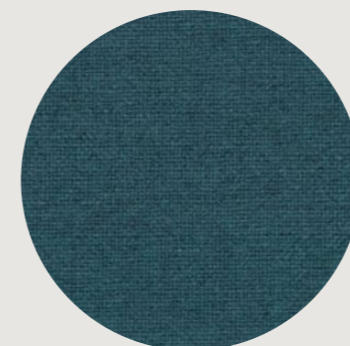
0713



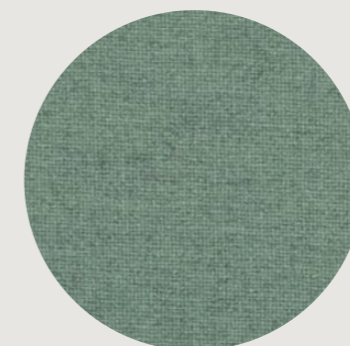
0743



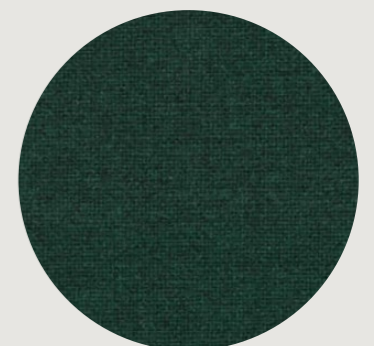
0773



0831



0923



0962

**MATERIAL DETAILS**

CONTENT : 100% NEW WOOL  
WIDTH : 140 CM (55")  
WEIGHT: 700 G/LIN. M (22.58 OZ/LY)  
COUNTRY OF ORIGIN : UNITED KINGDOM

DURABILITY : 45,000 MARTINDALE  
LIGHTFASTNESS : 6-7  
CLEANING CATEGORY : WOOL

**ENVIRONMENTAL**

EU ECOLABEL  
GREENGUARD GOLD CERTIFIED  
ENVIRONMENTAL PRODUCT DECLARATIONS (EPDS)  
HEALTH PRODUCT DECLARATIONS (HPDS)

**WARRANTY**

10 YEARS  
THE COLOURS ABOVE ARE A SELECTION OF THE TONICA 2 RANGE.  
FOR THE FULL RANGE AND MORE INFORMATION PLEASE VISIT  
[WWW.KVADRAT.DK](http://WWW.KVADRAT.DK)

PELLE PANORAMA - LEATHER CATEGORY C



3002 - SPACE



3008 - CATHEDRAL



3016 - ZINC



3017 - OBSIDIAN



3025 - PEPPERCORN



3027 - HEDGEROW



3036 - RUSTY METAL



3038 - SUNRISE



3043 - REINDEER



3045 - BUTTERMILK



3046 - FRONTIER



3054 - GRANDMA



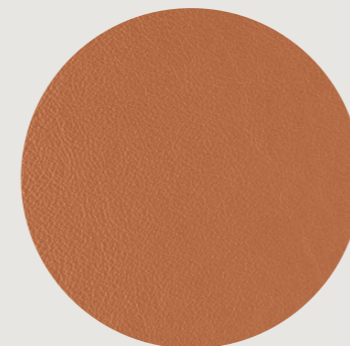
3056 - GARDENWALL



3060 - ALMOND



3070 - FABLE



3079 - PERU



3092 - SPINACH



3098 - CORNFLOUR

MATERIAL DETAILS

TYPE : PIGMENTED LEATHER, SMOOTH GRAIN  
 HIDE SIZE SQM : 5.0  
 THICKNESS : 1.0-1.2MM  
 COLOUR FASTNESS TO RUBBING : 4-5

FLEXING ENDURANCE : 50,000 CYCLES (NO FINISH DAMAGE CRACKS)  
 TEAR STRENGTH : ≥ 20 N  
 LIGHT FASTNESS : 5  
 FINISH ADHESION : 2.5 N/10MM

ENVIRONMENTAL

ALL WASTEWATER IS CLEANED IN A BIOLOGICAL TREATMENT PLANT, RECYCLED AND REUSED. NO PCP, CHROME VI, CADMIUM, FORMALDE- HYDE OR AZO - COL DYES ARE USED IN THE TANNING PROCESS. ALL DYES AND PIGMENTS (FINISHES) ARE SOLVENT FREE IE. WATER BASED  
 LOW VOC PRODUCT

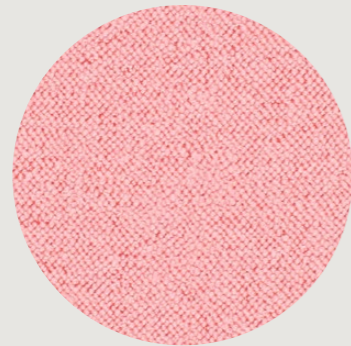
WARRANTY

1 YEAR  
 THE COLOURS ABOVE ARE A SELECTION OF THE PANORAMA RANGE. FOR THE FULL RANGE AND MORE INFORMATION PLEASE VISIT [WWW.PELLELEATHERS.COM.AU](http://WWW.PELLELEATHERS.COM.AU)

MAHARAM HEARTH - FABRIC CATEGORY D



001 - WEDDING



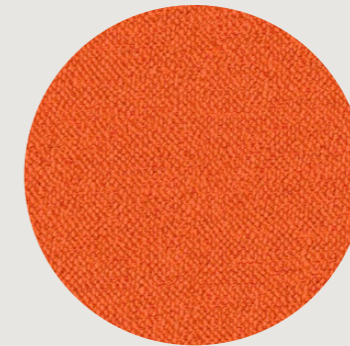
002 - SHERBERY



003 - REGNANT



004 - COFFEEHOUSE



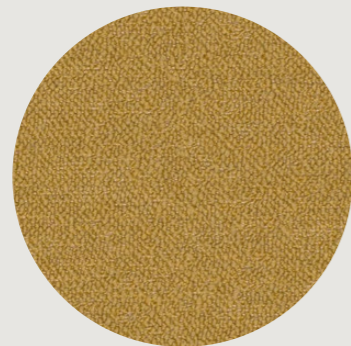
005 - GOLDFISH



006 - STARDUST



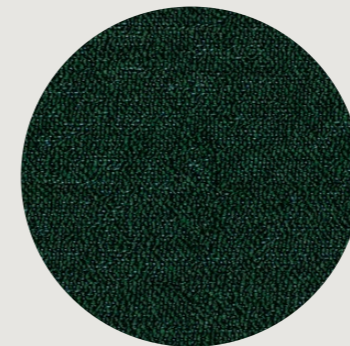
007 - AMPHITHEATER



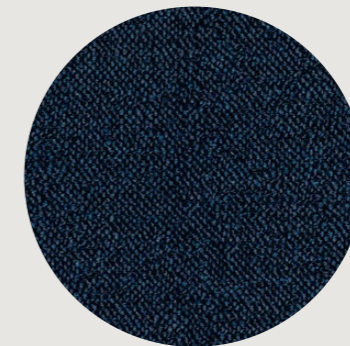
008 - GINGERSNAP



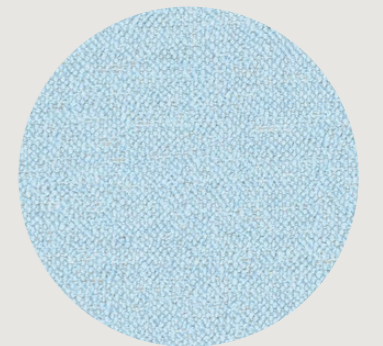
009 - DOWNFIELD



010 - SUBTROPICAL



011 - UNDERSEA



012 - KITE



013 - MYSTICAL



014 - MOONLET



015 - BONOBO

twentieth  
www.twentieth.net  
sales@twentieth.net  
323.904.1200

MATERIAL DETAILS

CONTENT : 32% WOOL, 31% ACRYLIC, 30% COTTON, 7% POLYESTER  
WIDTH : 135 CM (53")  
WEIGHT: 29.6 OZ/LY (900 GR/LM)  
COUNTRY OF ORIGIN : BELGIUM

DURABILITY : 80,000 DOUBLE RUBS WYZENBEEK WYZENBEEK  
LIGHTFASTNESS : 40+ HOURS  
CLEANING CATEGORY : POLYESTERS + WOOL

ENVIRONMENTAL

GREENGUARD AND GREENGUARD GOLD CERTIFIED  
HEALTHIER HOSPITALS COMPLIANT  
LBC RED LIST FREE  
REACH COMPLIANT  
CONTAINS BIO-BASED MATERIALS  
FR FREE  
PFAS-FREE

WARRANTY

3 YEARS  
FOR MORE INFORMATION PLEASE VISIT  
WWW.MAHARAM.COM

**KVADRAT VIDAR 4 - FABRIC CATEGORY D**



0106



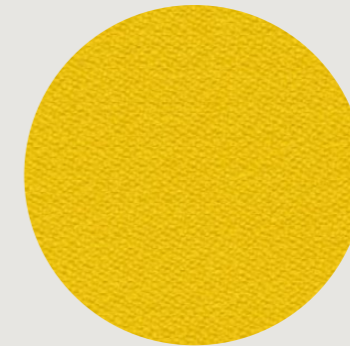
0133



0152



0323



0443



0472



0526



0582



0633



0656



0693



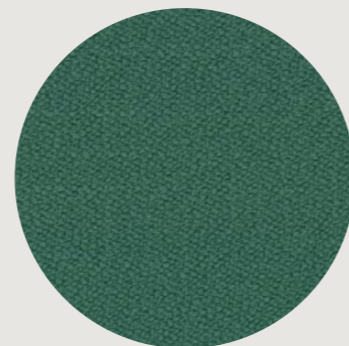
0733



0772



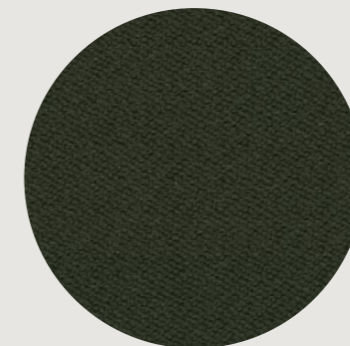
0872



0943



0956



0972



1880

**MATERIAL DETAILS**

CONTENT : 94% NEW WOOL 6% NYLON  
 WIDTH : 140 CM (55")  
 WEIGHT: 765 G/LIN. M (24.67 OZ/LY)  
 COUNTRY OF ORIGIN : NORWAY

DURABILITY : 100,000 MARTINDALE  
 LIGHTFASTNESS : 7  
 CLEANING CATEGORY : WOOL

**ENVIRONMENTAL**

EU ECOLABEL  
 GREENGUARD GOLD CERTIFIED  
 ENVIRONMENTAL PRODUCT DECLARATIONS (EPDS)  
 HEALTH PRODUCT DECLARATIONS (HPDS)

**WARRANTY**

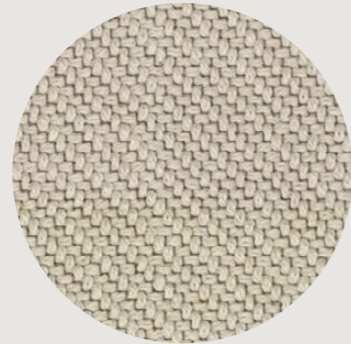
10 YEARS

THE COLOURS ABOVE ARE A SELECTION OF THE VIDAR 4 RANGE.  
 FOR THE FULL RANGE AND MORE INFORMATION PLEASE VISIT  
[WWW.KVADRAT.DK](http://WWW.KVADRAT.DK)

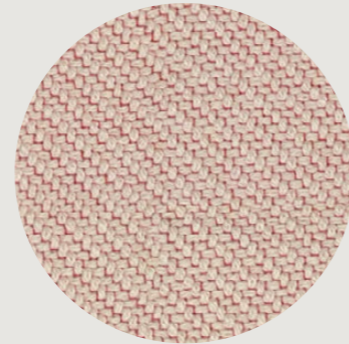
KVADRAT CODA 2 - FABRIC CATEGORY D



0100



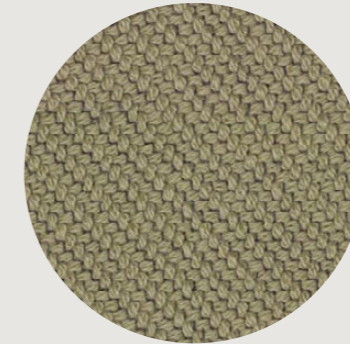
0103



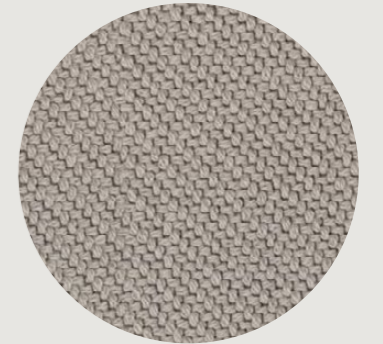
0116



0182



0222



0232



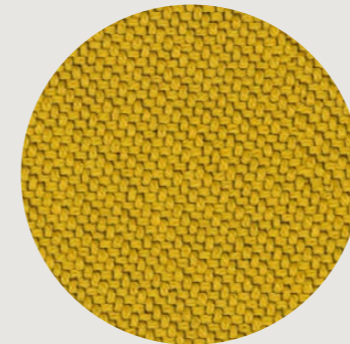
0242



0362



0382



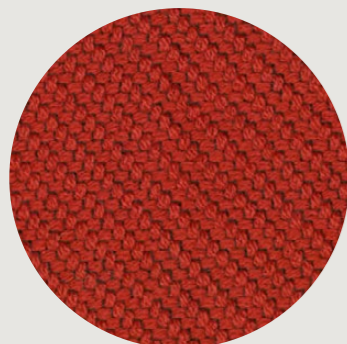
0410



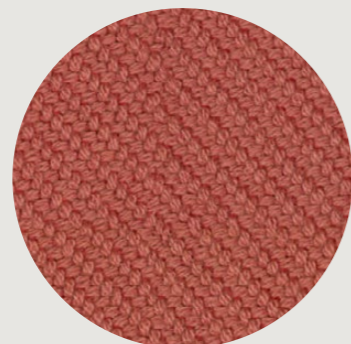
0422



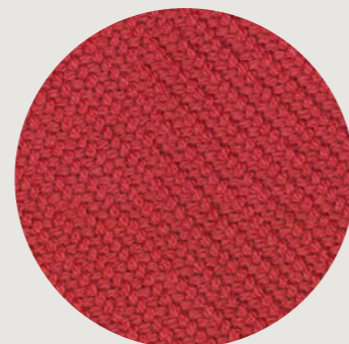
0442



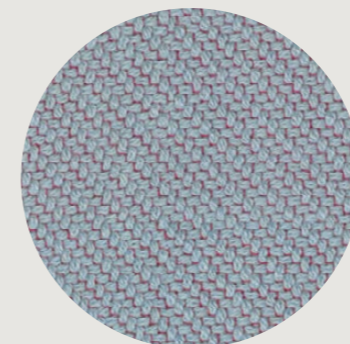
0610



0632



0642



0722



0762



0962

MATERIAL DETAILS

CONTENT : 90% NEW WOOL 10% NYLON  
WIDTH : 140 CM (55")  
WEIGHT: 860 G/LIN. M (27.74 OZ/LY)  
COUNTRY OF ORIGIN : NORWAY

DURABILITY : 100,000 MARTINDALE  
LIGHTFASTNESS : 6  
CLEANING CATEGORY : WOOL

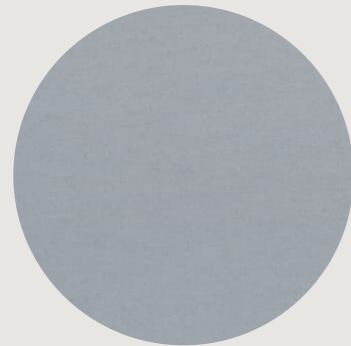
ENVIRONMENTAL

GREENGUARD GOLD CERTIFIED  
ENVIRONMENTAL PRODUCT DECLARATIONS (EPDS)  
HEALTH PRODUCT DECLARATIONS (HPDS)

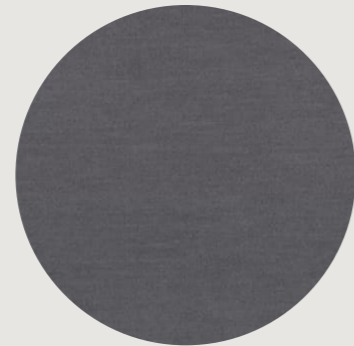
WARRANTY

10 YEARS  
FOR MORE INFORMATION PLEASE VISIT  
WWW.KVADRAT.DK

KVADRAT GENTLE 2 - FABRIC CATEGORY D



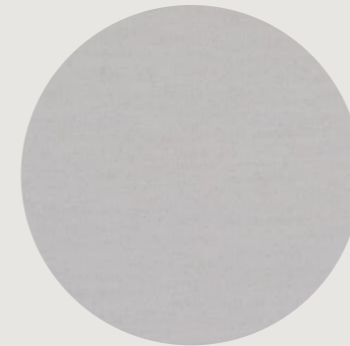
0113



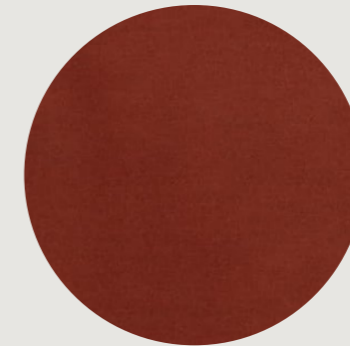
0133



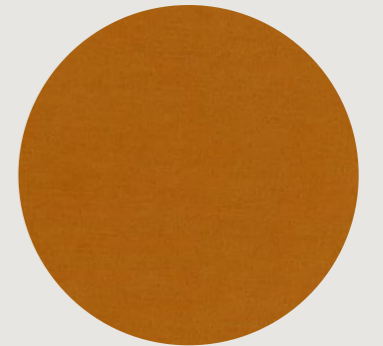
0193



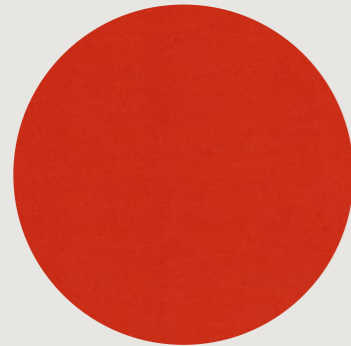
0203



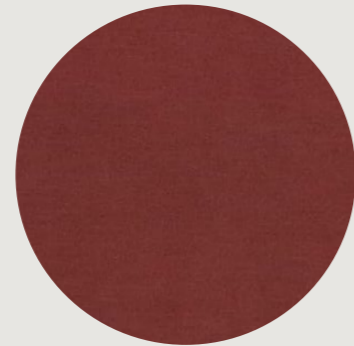
0373



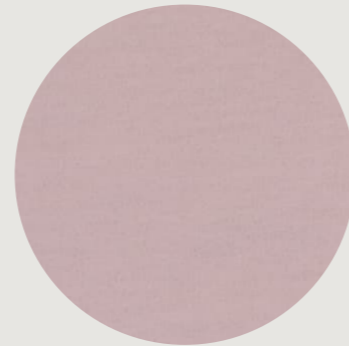
0443



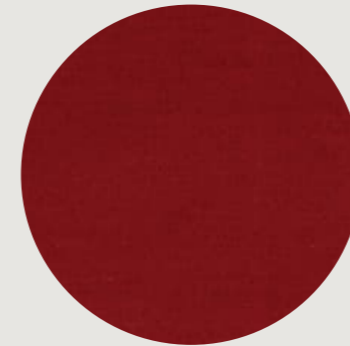
0553



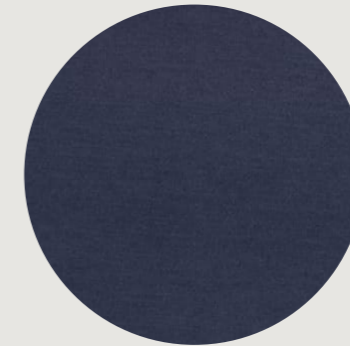
0573



0623



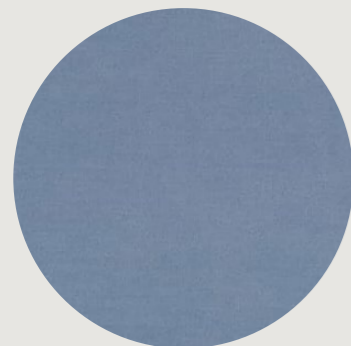
0663



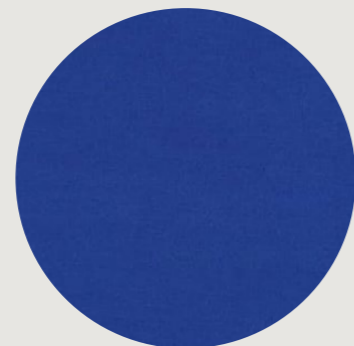
0673



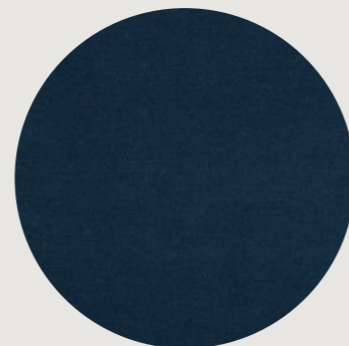
0683



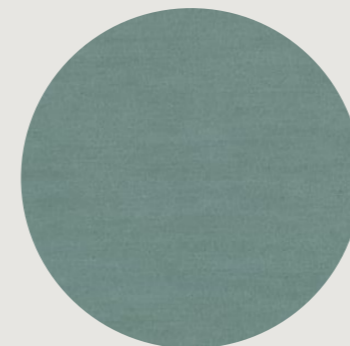
0733



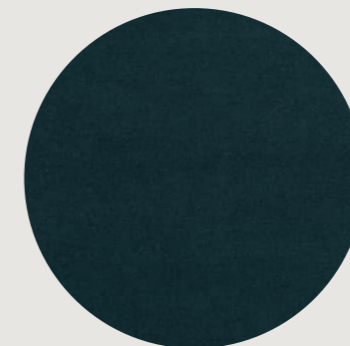
0753



0873



0933



0963



0973

MATERIAL DETAILS

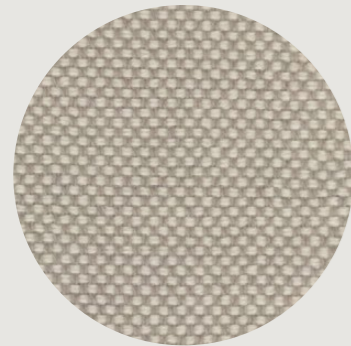
CONTENT : 60% NEW WOOL 20% NYLON 20% POLYESTER  
WIDTH : 167 CM (65.5")  
WEIGHT: 970 G/LIN. M (31.29 OZ/LY)  
COUNTRY OF ORIGIN : HOLLAND

DURABILITY : 90,000 MARTINDALE  
LIGHTFASTNESS : 7  
CLEANING CATEGORY : WOOL

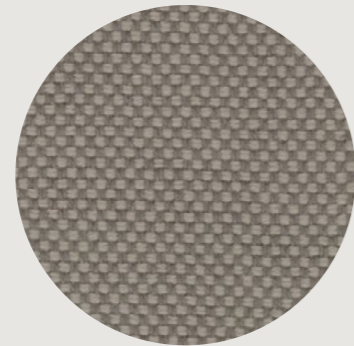
THE COLOURS ABOVE ARE A SELECTION OF THE GENTLE  
2 RANGE. FOR THE FULL RANGE AND MORE INFORMATION  
PLEASE VISIT WWW.KVADRAT.DK

twentieth  
www.twentieth.net  
sales@twentieth.net  
323.904.1200

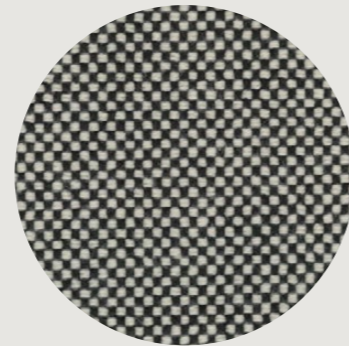
KVADRAT SISU - FABRIC CATEGORY D



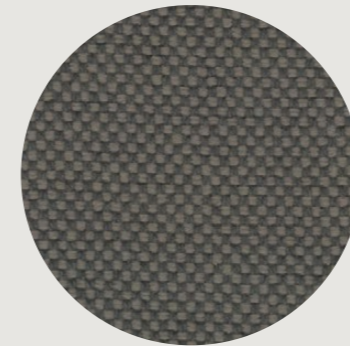
0105



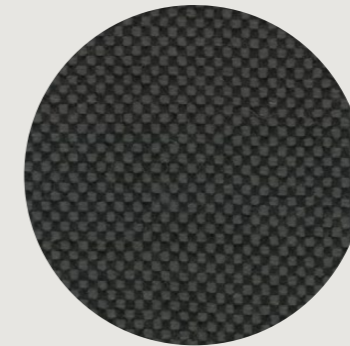
0125



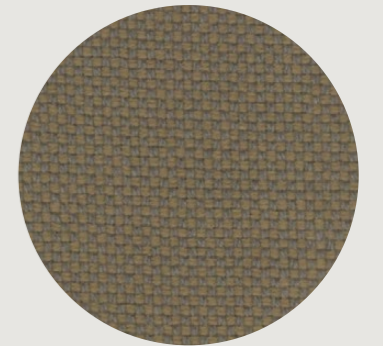
0165



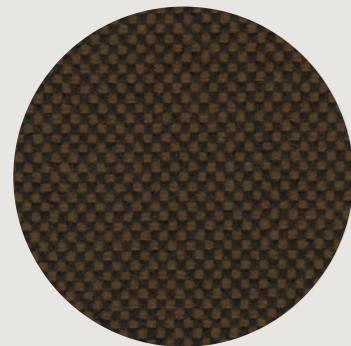
0175



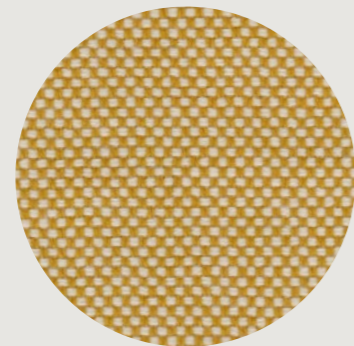
0195



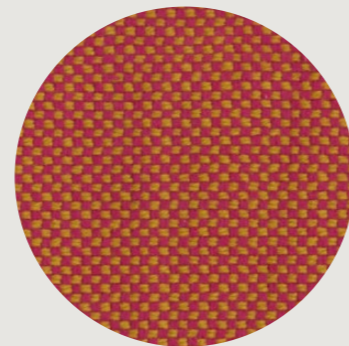
0225



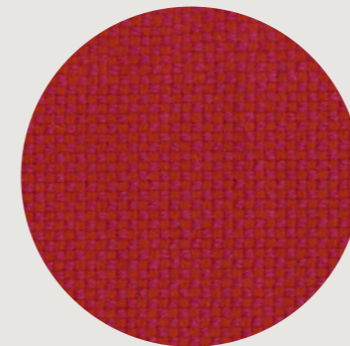
0375



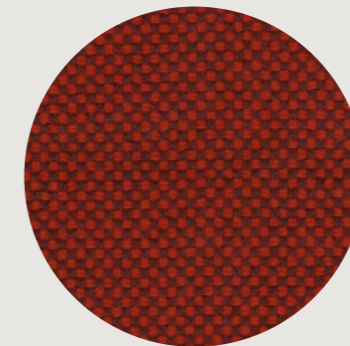
0405



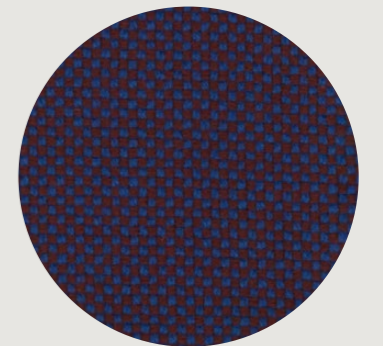
0525



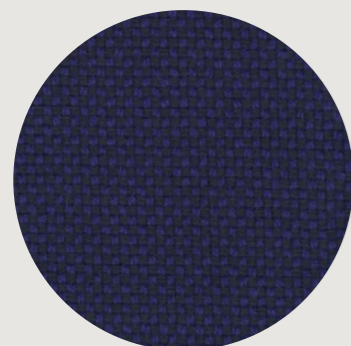
0645



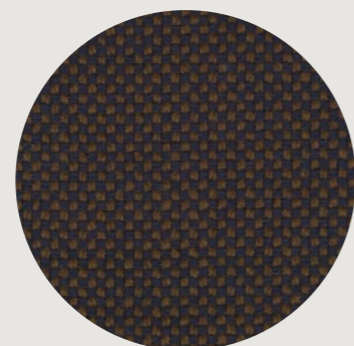
0655



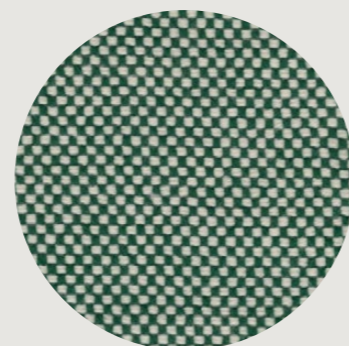
0765



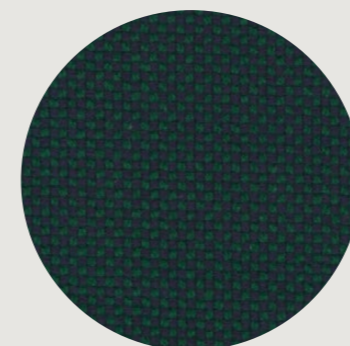
0775



0785



0805



0885

MATERIAL DETAILS

CONTENT : 91% NEW NORWEGIAN WOOL 8% NEW NEW ZEALAND WOOL 1% NYLON  
WIDTH : 142 CM (56")  
WEIGHT: 1,100 G/LIN. M (35.48 OZ/LY)

COUNTRY OF ORIGIN : NORWAY  
DURABILITY : 70,000 MARTINDALE  
LIGHTFASTNESS : 7  
CLEANING CATEGORY : WOOL

FOR MORE INFORMATION PLEASE VISIT [WWW.KVADRAT.DK](http://WWW.KVADRAT.DK)

twentieth  
[www.twentieth.net](http://www.twentieth.net)  
[sales@twentieth.net](mailto:sales@twentieth.net)  
323.904.1200

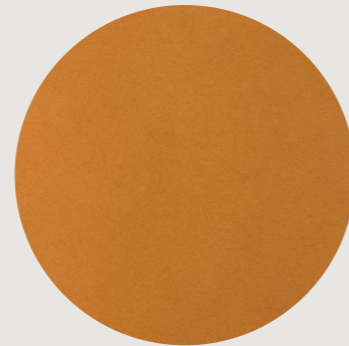
PELLE TOLEDO - LEATHER CATEGORY D



4503 - CHURROS



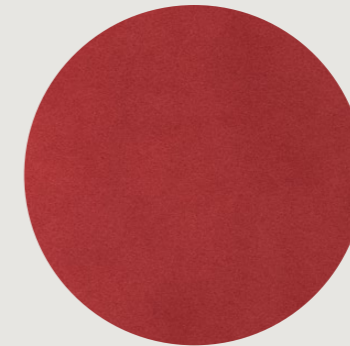
4504 - BUFF



4506 - DORADO



4508 - SCHNAPPS



4510 - IMPERIAL



4512 - ARUNA



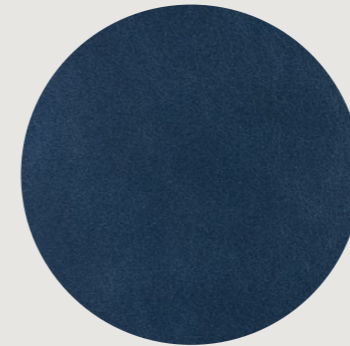
4514 - GRANA



4516 - UNIVERSE



4517 - ULTRA



4519 - ADMIRAL



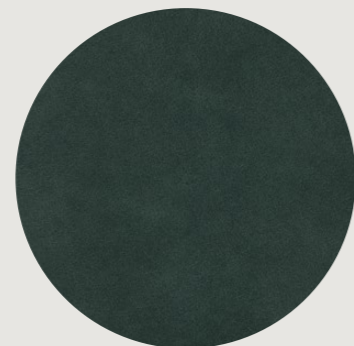
4520 - DIM



4521 - HIGHWAY



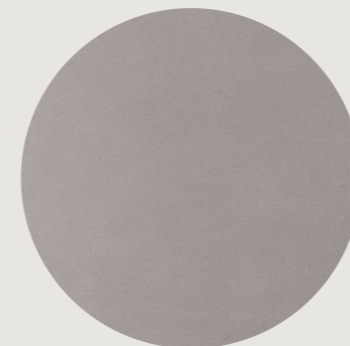
4528 - CHORIZO



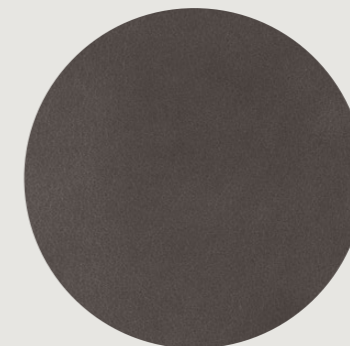
4525 - JUNGLE



4526 - PAELLA



4531 - PLATEADO



4532 - ANCHOR



4533 - RAVEN

MATERIAL DETAILS

TYPE : ANILINE LEATHER, SMOOTH GRAIN  
 HIDE SIZE SQM : 4.5 - 5.5  
 THICKNESS : 1.0-1.2MM  
 COLOURFASTNESS TO LIGHT : ≥ 3  
 COLOUR FASTNESS TO RUBBING : ≥ 3

FLEXING ENDURANCE : 30,000 FLEXES  
 TEAR STRENGTH : ≥ 20 N  
 LIGHT FASTNESS : 3  
 FINISH ADHESION : 2.0 N/10MM

ENVIRONMENTAL

ALL WASTEWATER IS CLEANED IN A BIOLOGICAL TREATMENT PLANT, RECYCLED AND REUSED. NO PCP, CHROME VI, CADMIUM, FORMALDEHYDE OR AZO - COL DYES ARE USED IN THE TANNING PROCESS. ALL DYES AND PIGMENTS (FINISHES) ARE SOLVENT FREE IE. WATER BASED  
 LOW VOC PRODUCT

WARRANTY

1 YEAR

THE COLOURS ABOVE ARE A SELECTION OF THE TOLEDO RANGE. FOR THE FULL RANGE AND MORE INFORMATION PLEASE VISIT [WWW.PELLELEATHERS.COM.AU](http://WWW.PELLELEATHERS.COM.AU)

twentieth

sales@twentieth.net

323.904.1200

www.twentieth.net

ROSS GARDAM

PHOTOGRAPHY BY HAYDN CATTACH - HAYDNCATTACH.COM & MR.P STUDIOS - MRPSTUDIOS.COM

COLOUR AND SWATCHES SHOWN IN THIS DOCUMENT ARE FOR REFERENCE ONLY AND MAY DIFFER IN ACTUALITY.

COPYRIGHT ©2021 ROSS GARDAM PTY LTD. ALL CONCEPTS, PHOTOGRAPHY AND IDEAS CONTAINED WITHIN THIS DOCUMENT ARE PRIVATE AND CONFIDENTIAL. THEY MUST NOT BE REPRODUCED IN ANY WAY OR FORM AND REMAIN THE INTELLECTUAL PROPERTY OF ROSS GARDAM. ALL PRODUCTS ARE REGISTERED DESIGNS WITH IP AUSTRALIA.