

skram



lineground 6-drawer horizontal bureau

L25 / L26 / L27



Lineground 6-drawer bureaus feature solid timber construction, mortise-and-tenon joinery, and mitered corners with matched seams/waterfall edges. There are 3 standard models, and each offers graduated drawers in maple timber with cork-lined bottoms, soft-closing concealed runners, and low-profile tab pulls. Drawer faces are to match, with leather overlays, or opaque colors. Custom sizes, configurations, and materials are available. Residential or contract use.

skram

L25 width 60 / 152cm depth 18 / 46cm height 27.5 / 70cm

L26 width 72 / 183cm depth 18 / 46cm height 27.5 / 70cm

L27 width 90 / 229cm depth 18 / 46cm height 27.5 / 70cm

Timber



WA-N: White
Ash, Natural



WA-G: White
Ash, Grey



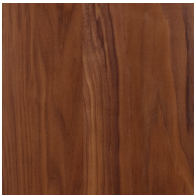
WA-E: White
Ash, Ebonized



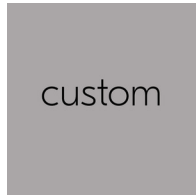
WA-WW: White
Ash,
Whitewashed



RWO-N: Rift
White Oak,
Natural



WAL: Walnut,
Natural



custom

skram

Metal

Natural



SS4: Brushed
Stainless Steel



GML: Gunmetal



DRB: Dark
Rubbed Bronze



NRB: Natural
Rubbed Bronze

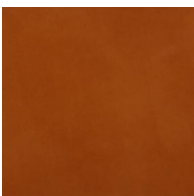
Matte Opaques



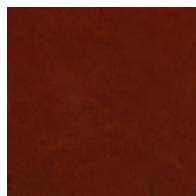
MOB: Matte
Opaque Black

Leather

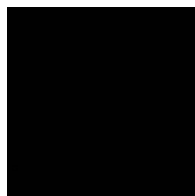
Character: Heavyweight



CL-TN-H: Tan



CL-CNT-H:
Chestnut

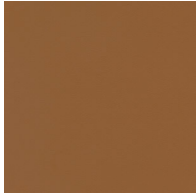


CL-BLK-H: Black

skram

Leather

Architectural



AL-WBG: Warm
Beige

COM - COL



AL BRN: Brown



AL-CRM: Cream



AL-MEDG:
Medium Grey



AL-SMK: Smoke



com/col

com-col