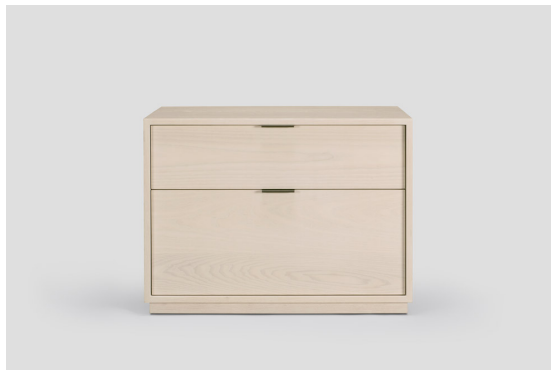
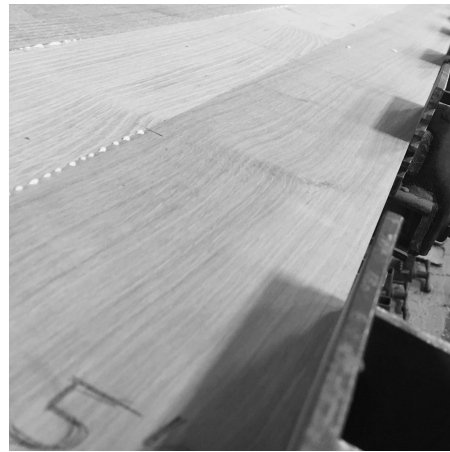


skram



**lineground side
table/nightstand #3**

L08



The lineground no. 3 side table features solid timber construction, mortise-and-tenon joinery, and mitered corners with matched seams/waterfall edges. Drawers are maple with cork-lined bottoms with soft-closing concealed runners and low profile tab style drawer pulls. Skram timber and veneer options are available on this product, as well as options for contrasting drawer face materials such as leather, opaque color, or bespoke options. Custom sizes, configurations, and materials are available. Residential or contract use.

skram

L08 width 32 / 81cm depth 18 / 46cm height 24 / 61cm

Timber



WA-N: White
Ash, Natural



WA-G: White
Ash, Grey



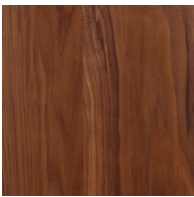
WA-E: White
Ash, Ebonized



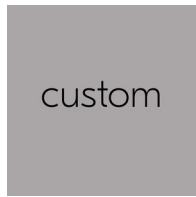
WA-WW: White
Ash,
Whitewashed



RWO-N: Rift
White Oak,
Natural



WAL: Walnut,
Natural



custom

Metal

Natural



SS4: Brushed
Stainless Steel



GML: Gunmetal



DRB: Dark
Rubbed Bronze



NRB: Natural
Rubbed Bronze

skram

Metal

Matte Opaques



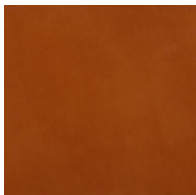
MOB: Matte
Opaque Black



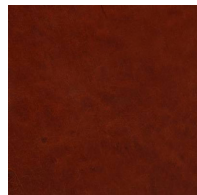
custom

Leather

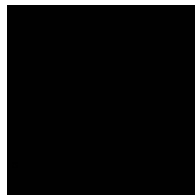
Character: Heavyweight



CL-TN-H: Tan

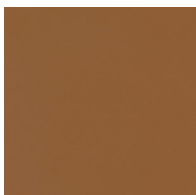


CL-CNT-H:
Chestnut

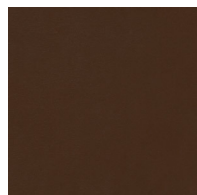


CL-BLK-H: Black

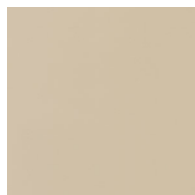
Architectural



AL-WBG: Warm
Beige



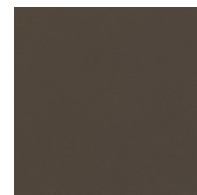
AL BRN: Brown



AL-CRM: Cream



AL-MEDG:
Medium Grey



AL-SMK: Smoke